

## KEL-FG-A

### Flange Enclosures for Cable Entry



Slit KT grommets

1

## Product Description

The cable entry frames KEL-FG-A are suited for installation, sealing and strain relief of cables with connectors and conduits at an angle of 90° to the panel, enclosure or machine wall.

The KEL-FG-A frame matches exactly the cut-out dimensions for 24-pin standard industrial connectors. A flat rubber gasket is included in the shipment.

## Advantages & Benefits

- Installation at an angle of 90° to the wall
- Mechanical protection of cable directly at the place of entry
- Protection against water spray and drips
- Warranty on pre-terminated cables remains
- Strain relief according to EN 62444
- High stability, vibration resistant

## Specifications

Material	Polyamide (PA)
Flame class	UL94-Vo
IP Rating	IP54, with gasket and correct selection of the cable grommets
Temperature	- 40°C to + 140°C (static) - 40°F to + 284°F (static)
Properties	Halogen-free, silicone-free
Cut-out dimensions	36 × 112 mm, Page 200 - 201

## Accessories

Cable grommets	44 - 48
KEL-SNAP Mounting frames	31
KEL-EMC Grounding mounts	126 - 128
ST Plugs	49

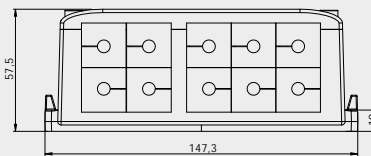
### Description

### Type

### Order No.

### Grommets small | large

### PU



KEL-FG-A10

42320

10|-

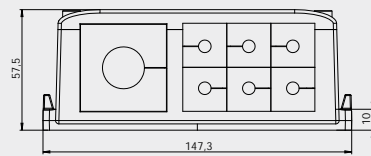
1

KEL-FG-A10  
with V2A  
screws

42320.200

10|-

1



KEL-FG-A7

42322

6|1

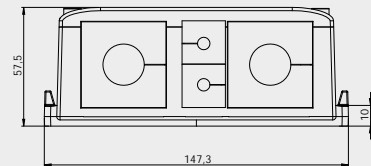
1

KEL-FG-A7  
with V2A  
screws

42322.200

6|1

1



KEL-FG-A4

42324

2|2

1

KEL-FG-A4  
with V2A  
screws

42324.200

2|2

1

