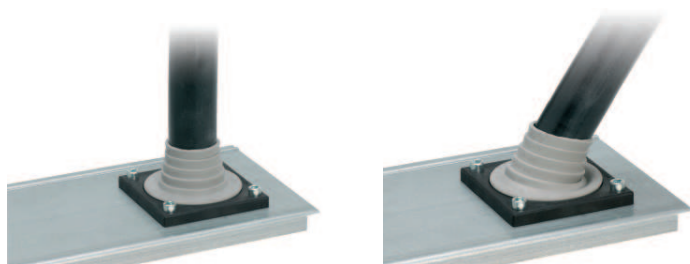


KEL - JUMBO flex Cable entry inserts



Type	Order No.	Clamping range	PU	Description
------	-----------	----------------	----	-------------

KEL - JUMBO flex 27-48	42614	27 - 48 mm	1	
KEL - JUMBO flex 47-68	42616	47 - 68 mm	1	

Product description

The KEL-jumbo-flex is a flexible cable entry system for standard cables with a diameter range from 27 - 68 mm.

They are ideal for the routing supply cables into the switch cabinets.

Cutting of KEL-jumbo-flex inserts:

- Cable diameter less 5 mm
- The corresponding diameters are marked on the insert

Advantages

- Assembly within seconds
- Non-flexible cables, pipes and conduits can be routed at angled positions
- Small installation dimensions (88 x 88 mm)

Specification

Material	Frame: Polyamide Inserts: Elastomer
Flame class	UL-94 Vo, self-extinguishing
Protection class	IP 65
Temperature	- 30°C to + 90°C (static)
Properties	halogen-free, silicone-free
Cut-out dimensions	round, ϕ -cable + 20%

Accessories

MP Module plates	Page 86
BP Blind plates	Page 88