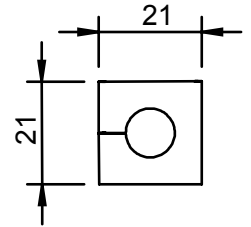


KT

Inserts, small



1

Product description

KT cable inserts small are used with the following cable entry frames:

- KEL - Page 6 - 13
- KEL-FG - Page 14
- KVT - Page 16 - 17
- KVT-W90 - Page 18

The model range KT small is designed for cable diameters from 2 to 17mm.

Assembly

When installing the insert, the smooth side of the insert faces the middle of the cable entry frame.

Specification KT grey

Material Elastomer
 Flame class UL-94 Vo, self-extinguishing
 Temperature - 30°C to+ 90°C (static)
 Properties halogen-free, silicone-free

Specification KT black

Material Elastomer
 Flame class UL-94 HB
 Temperature - 30°C to + 90°C (static)
 Properties higher chemical resistance,
 UV-stabilized

Description	Type	Order No grey	Order No black	Clamping range	PU
BTK 	BTK	41251	41351	Blind insert	10
KT 	KT 2	39934	41302	2 - 3 mm	10
	KT 3	41203	41303	3 - 4 mm	10
	KT 4	41204	41304	4 - 5 mm	10
	KT 5	41205	41305	5 - 6 mm	10
	KT 6	41206	41306	6 - 7 mm	10
	KT 7	41207	41307	7 - 8 mm	10
	KT 8	41208	41308	8 - 9 mm	10
	KT 9	41209	41309	9 - 10 mm	10
	KT 10	41210	41310	10 - 11 mm	10
	KT 11	41211	41311	11 - 12 mm	10
	KT 12	41212	41312	12 - 13 mm	10
	KT 13	41213	41313	13 - 14 mm	10
	KT 14	41214	41314	14 - 15 mm	10
	KT 15	41215	41315	15 - 16 mm	10
	KTs 16	39901	39912	16 mm	10
	KTs 17	39900	39913	17 mm	10