

# KVT

## Split Cable Glands



1

### Product Description

KVT is a circular split frame for quick and easy installation and sealing of cables or complete cable harnesses.

Polyamide locknuts are included in the shipment.

For routing D-Sub, DVI or PROFIBUS connectors in combination with the split cable glands KVT, special locknuts with cut-outs are required.

### Locknuts

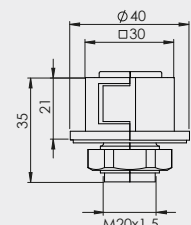
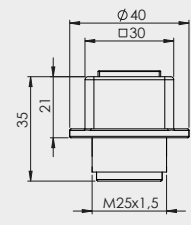
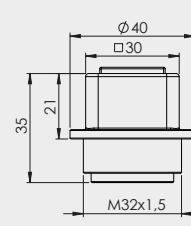
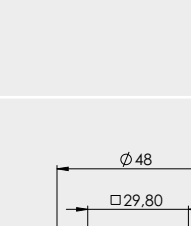
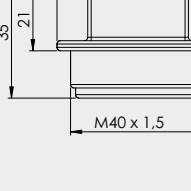
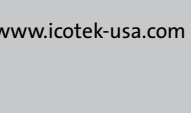
Locknuts with special cut-outs are available separately. The cut-out dimensions are listed on page 144.



**KGM-SUB-D9** fits D-Sub 9 connectors  
(Required wall cut-out:  $\varnothing$  36 mm, PU: 10)  
 Order No. 45105    Order No. 45106

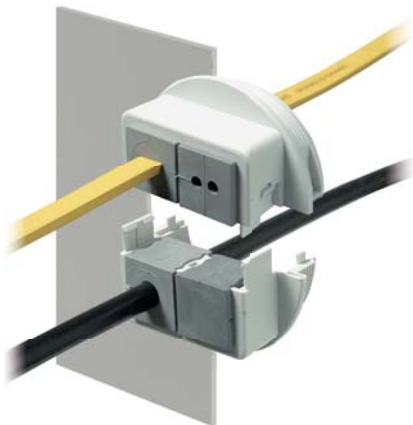
**KGM-PB** fits DVI and PROFIBUS connectors  
(Required wall cut-out:  $\varnothing$  42 mm, PU: 10)  
 Order No. 45107    Order No. 45109

**KGM-SUB-D25** fits SUB-D25 connectors  
(Required wall cut-out:  $\varnothing$  50 mm, PU: 10)  
 Order No. 45108    Order No. 45110

Description	Type	Order No.	Inserts KT small   large	Thread Thread length	PU
	KVT 20**	<input type="checkbox"/> 45034 <input checked="" type="checkbox"/> 45024	1 -	M20 x 1.5 Length: 14 mm	10
	KVT 25***	<input type="checkbox"/> 45035 <input checked="" type="checkbox"/> 45025	1 -	M25 x 1.5 Length: 14 mm	10
	KVT 32	<input type="checkbox"/> 45036 <input checked="" type="checkbox"/> 45026	1 -	M32 x 1.5 Length: 14 mm	10
	KVT 32 + KGM-SUB-D9	<input type="checkbox"/> 45037 <input checked="" type="checkbox"/> 45027	1 -	M32 x 1.5 Length: 14 mm	10
	KVT 40	<input type="checkbox"/> 45203 <input checked="" type="checkbox"/> 45028	1 -	M40 x 1.5 Length: 14 mm	10
	KVT 40 + KGM-PB	<input type="checkbox"/> 45205 <input checked="" type="checkbox"/> 45029	1 -	M40 x 1.5 Length: 14 mm	10

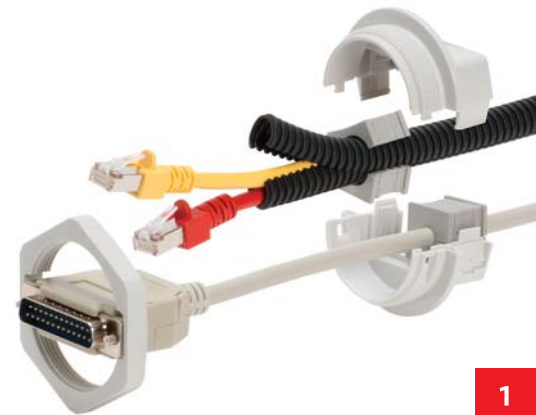
\* Only valid for gray product types

\*\* Max. cable diameter of 11 mm | \*\*\* Max. cable diameter of 15 mm

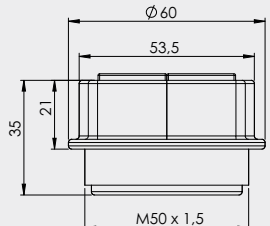
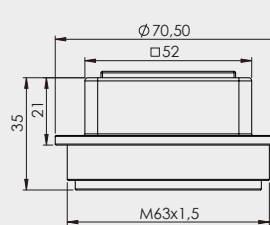


# KVT

## Split Cable Glands



Type	Order No.	Inserts KT small   large	Thread Thread length	PU	Description
------	-----------	--------------------------	----------------------	----	-------------

KVT 50 2	<input type="checkbox"/> 45204 <input type="checkbox"/> 45030	2 -	M50 × 1,5 Length: 14 mm	5	
KVT 50 2 + KGM-SUB-D25	<input type="checkbox"/> 45206 <input type="checkbox"/> 45031	2 -	M50 × 1,5 Length: 14 mm	5	
KVT 63 1 + GM 63 **	<input type="checkbox"/> 45211 <input type="checkbox"/> 45111	- 1	M63 × 1,5 Length: 14 mm	5	
KVT 63 4 + GM 63 **	<input type="checkbox"/> 45214 <input type="checkbox"/> 45114	4 -	M63 × 1,5 Length: 14 mm	5	

### Advantages

- Insertion of pre-terminated cables
- Warranty on pre-terminated cables remains
- Retrofitting and maintenance can be carried out easily and quickly
- High packing density, wide variety of inserts
- Suitable for standard or metric cut-outs
- Polyamide locknuts are included in the shipment



### Specifications

Material	Polycarbonate (PC)
Color	<input type="checkbox"/> gray (similar RAL 7035) <input type="checkbox"/> black
Flame class	UL94-Vo, self-extinguishing
Protection class	IP54, with gasket and correct selection of the cable inserts (certified according to DIN EN 60529:2000-09)
Temperature	- 30°C to + 100°C (static)
Properties	Halogen free, silicone free
Cut-out dimension	Metric standard sizes

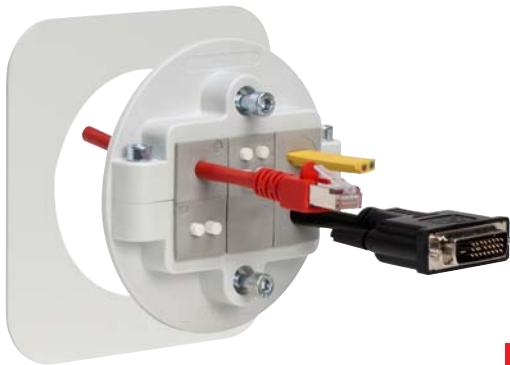
### Accessories

KT Cable inserts	Page 30 - 34
KVT-EMC Brackets	Page 111
Locknuts	Page 144

\* Only valid for gray product types  
 \*\* Locknut GM 63 (nickel plated brass) is included in delivery

# KVT 80

## Split Cable Glands



1

### Product Description

The KVT 80 split cable glands are designed for routing and sealing pre-terminated cables.

By connecting the two half shells via attached screws, the inserts provide sufficient pressure on the routed cables to obtain a high degree of strain relief. The KVT 80 can be fitted to a wall thickness from 1.5 mm to 10 mm.

### Advantages

- Insertion of pre-terminated cables
- Warranty on pre-terminated cables remains
- Retrofitting and maintenance can be carried out easily and quickly
- High packing density, wide variety of inserts
- Quick and easy assembly from the front side
- Strain relief according to EN 50262

### Notes

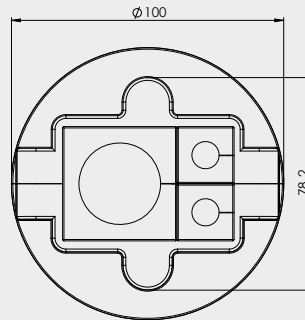
When mounting the KVT 80 on sheet metal, we recommend the following torque values:

- 1.5 mm sheet = 1 Nm
- From 2 mm sheet = 1.5 Nm

### Specifications

Material	Polycarbonate (PC)
	Screws: Stainless steel
Color	■ gray (similar RAL 7035) ■ black
Flame class	UL94-Vo, self-extinguishing
Protection class	IP54, with gasket and correct selection of the cable inserts
Temperature	- 30°C to + 100°C (static)
Properties	Halogen free, silicone free
Cut-out dimension	80 mm in diameter

Description	Type	Order No.	Inserts KT small   large	PU
-------------	------	-----------	-----------------------------	----

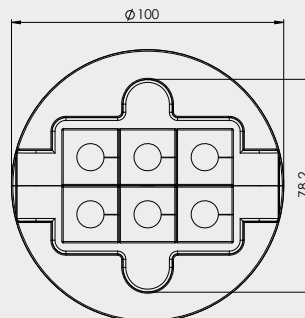


KVT 80|3

- 45236
- 45239

2|1

1

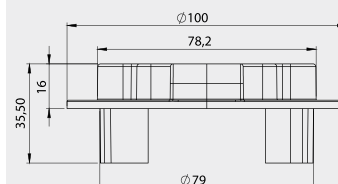


KVT 80|6

- 45237
- 45238

6|-

1



\*Only valid for gray product types

### Accessories