

Specifications			
	■ Mk2100	■ Mk1100	
Printing method	Thermal transfer		
Resolution	300dpi		
Printing speed	Tubes : High Speed 25 mm/s, Standard 18.5 mm/s , Labels : 25 mm/s	12.5 mm/s	
Output rate	High Speed Mode : 35 pcs./min. , Standard Mode : 30 pcs./ min. (Printing 20mm tubes, 5 full-size characters, consecutive print mode, half - cutting.)	21 pcs./min. (Printing 20mm tubes, 5 full - size characters, consecutive print mode, half - cutting.)	
Ink Ribbons	Exclusive cassette. Black : 100 m; White : 85 m ; Black for Marking Strip (40m)	Exclusive cassette. Black : 100 m ; White : 85 m	
Character sizes	1.3 mm(only full-width available), 2 mm3 mm, 6 mm (full-width, half-width available for each).	2 mm, 3 mm, 6 mm (full-width, half-width available for each).	
Input modes	Alphanumeric, Symbol input	Alphanumeric, Symbol input	
Display	LCD Graphic (160 x 64 dots)		
Display capacity	10 characters / line x 2 lines (full-width) or 20 characters/line x 2 lines (half-width) (3 lines editing is possible.)	10 characters / line x 2 lines (full-width) or 20 characters/line x 2 lines (half-width)	
Built-in memory	Print data: Approx. 2,500 characters Files: Approx. 15,000 characters Service life of internal backup battery for data storage: About 5 years	Print data : Approx. 2,500 characters Files : Approx. 7,500 characters Service life of internal backup battery for data storage: About 5 years	
Media cutting method	Automatic full - cutting, Automatic half - cutting		
Power supply	Exclusive AC Adapter (Input voltage : AC 100V - 240V 50 / 60 Hz)		
PC interface	USB2.0 Full - Speed, Exclusive PC Connection Kit(Included)	—	
Operating environment	15° C - 32.5° C (59° F - 90.5° F), 10% - 85% RH Range is lowered to 5° C (41° F) with Tube Warmer option installed.		
Storage environment	5° C - 32.5° C (41° F - 90.5° F), 10% - 90% RH		
Dimensions (W x D x H)	250 x 300 x 85 mm (9.8 x 11.8 x 3.4 in.)		
Weight	2 kg (4.4 lb.) (printer only)		
Print Media	Tube	PVC tube, \varnothing 2.5-6.5 mm, 0.5 mm thick	PVC tube, \varnothing 2.5 - 5.2 mm, 0.5 mm thick
		Tube attachment option is required.	Tube attachment option is required.
		(Other tubes should be tested for printing.)	(Other tubes should be tested for printing.)
	Label Tape	Exclusive cassettes (White, Yellow, Silver)	Exclusive cassettes (White, Yellow, Silver)
		Widths : 6 mm, 9 mm, 12 mm, Length 30 m (Silver: 27 m)	Widths: 6 mm, 9 mm, 12 mm, Length: 30 m (Silver: 27 m)
		Segment length can be set to 2 mm through 150 mm. *	Segment length can be set to 8 mm through 150 mm.
	Wrap Around Tape	Exclusive cassettes	Exclusive cassettes
		Print area only : White, Other areas: Transparent	Print area only: White, Other areas: Transparent
		Take-up length : 8 m Length : 33 mm	Take-up length: 8 m Length: 33 mm
	Marking Strip	Width : 6 -150 mm (depends on cut setting)	Width: 8-150 mm (depends on cut setting)
		Specified thickness : 0.5 mm	—
		Plates of other thickness should be tested for printing.	
		Width : 8 mm, 8.5 mm, 9 mm, 9.5 mm, 10 mm	
		Plate Attachment option is required.	
	Exclusive ribbon cassette is required.		
Heat Shrink Tube	Manual cut only	Exclusive cassettes (White, Yellow) Shrink ratio : 3 : 1 , \varnothing 3 mm, \varnothing 6 mm, length 5 m Shrink ratio: 2:1, \varnothing 3.2 mm, 4.8 mm, 6.4 mm, length: 5 m	
4mm ID strip	4mm ID strip Exclusive cassette (White, Yellow)		
	Length : 5m		

* If 1.3mm full-width or 2mm half-width character is specified for segment length of less than 3mm, text might be printed crossing over cutting line.

Option	Product Code Product Name	Compatible Printer
	3471A026 Tube Warmer Set	Mk2100/Mk1100
	3471A027 Tube Feeder Set	Mk2100
	3471A032 Wrap Around Tape Guide	Mk2100/Mk1100
	4013B001 Hard Case	Mk2100/Mk1100
	3476A044 Soft Case	Mk2100/Mk1100
	3471A033 Plate Attachment	Mk2100
	3476A046 Tube Attachment	Mk2100/Mk1100

Consumables	Product Code Product Name	Product Code Product Name
	3604B001 Ribbon Cassette Black (100m)	3476A042 Cutter Set
	3607B001 Ribbon Cassette White (85m)	3476A043 Cleaner Set for Tube Attachment and Tube Feeder
	3606B001 Ribbon Cassette Black for Marking Strip(40m)	3476A078 Cleaner Set for Plate Attachment
	3476A023 Label Tape Cassette6mm × 30m(White)	3476A071 Cleaner Set for Tube Warmer
	3476A024 Label Tape Cassette9mm × 30m(White)	3476A086 Heat Shrink Tube3 : 1 3mm × 5m(Yellow)
	3476A025 Label Tape Cassette12mm × 30m(White)	3476A085 Heat Shrink Tube3 : 1 3mm × 5m(White)
	3476A026 Label Tape Cassette6mm × 30m(Yellow)	3476A088 Heat Shrink Tube3 : 1 6mm × 5m(Yellow)
	3476A027 Label Tape Cassette9mm × 30m(Yellow)	3476A087 Heat Shrink Tube3 : 1 6mm × 5m(White)
	3476A028 Label Tape Cassette12mm × 30m(Yellow)	3476A080 Heat Shrink Tube2 : 1 3.2mm × 5m(Yellow)
	3476A068 Label Tape Cassette6mm × 27m(Silver)	3476A079 Heat Shrink Tube2 : 1 3.2mm × 5m(White)
	3476A069 Label Tape Cassette9mm × 27m(Silver)	3476A082 Heat Shrink Tube2 : 1 4.8mm × 5m(Yellow)
	3476A070 Label Tape Cassette12mm × 27m(Silver)	3476A081 Heat Shrink Tube2 : 1 4.8mm × 5m(White)
	3476A075 Wrap Around Tape33mm × 8m(White)	3476A084 Heat Shrink Tube2 : 1 6.4mm × 5m(Yellow)
	3476A035 4mm ID Stript 4mm × 5m (White)	3476A083 Heat Shrink Tube2 : 1 6.4mm × 5m(White)
	3476A072 4mm ID Stript 4mm × 5m (Yellow)	



Caution!
Before you use an Mk series printer, please read the instruction manual thoroughly.
When you use the printer, obey all instructions in the manual. Always operate the printer with the power supply and voltage rating described in the manual for your country.

Specifications are subject to change without prior notice for product improvement.

NISCA Corporation(Canon Group)
430-1 Kobayashi Masuho-Cho
Minamikoma-Gun Yamanashi-Ken 400-0593 JAPAN



CABLE ID PRINTER

Mk2100/Mk1100

The beauty of print, Speedy, Ease of use

Meet the all requirements of the Cable ID Marking.

Flexible and Versatile, USB interface PC Linked high end model.

CABLE ID PRINTER **Mk2100**



- Point 1

High precision print by 1.3mm Font and 2mm print pitch.
- Point 2

High Speed and fast output rate 35pcs/min*
- Point 3

Bright back light LCD display
- Point 4

Ink Ribbon type and remaining amount display
- Point 5

USB interface(full speed) PC linkage
- *20mm tube, 5 full size character, consecutive print mode, fast cutting

The standard model with superior quality and ease of operation.

CABLE ID PRINTER **Mk 1100**



- Point 1

Bright back light LCD display
- Point 2

Standard output rate 21pcs/min*
- Point 3

Ink Ribbon type and remaining amount display
- *20mm tube, 5 full size character, consecutive print mode, fast cutting

High quality Printing on a Variety of Media

Tubes

Direct printing on commercially available round tubes (inner diameter: 2.5 to 6.5 mm*) is possible. High-quality clear and crisp printing ensures high management efficiency.

* The Mk1100 is compatible with 2.5 mm to 5.2 mm diameter cables.



Label tapes

Characters can be printed on the labels to be affixed to the devices at distribution boxes. Characters can be printed from a minimum of 1.3 mm font size*, which is extremely useful for various applications at work sites.

* Mk2100 only



Wrap Around Tape

Transparent laminate covers the printed surface – no need to worry about friction wearing away letters. Width:8-150mm. Length of printed text can vary according to different use.

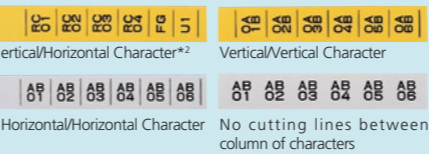


Heat shrink tubes

Heat shrink tubes are available in different shrinkage ratio, 1/2 and 1/3. Tubes available in yellow and white.

Various Print Patterns

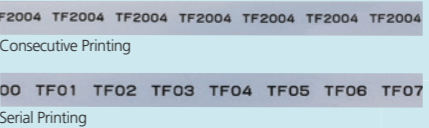
You can use various print features such as framing, 3 lines/segment printing*, selective character orientation, and underlining in addition to selective character size and pitch.



*1 Only the Mk2100 allows 3 lines/segment printing of 1.3 mm (full-width) alphanumeric characters.
*2 Only Mk2100 allows Vertical/Horizontal Character printing.

Consecutive/Serial Printing

Mk Series printers can be set to print the same text on every segment (consecutive printing). Just enter the data and the number of segments required, then start the print. Or, Mk Series printer can be set to print numbers that increment automatically as the segments print (serial printing). No need to do separate entries and printing for each segment!



Automatic Cutting/Full-cut is also possible

Each segment is partially cut automatically as it prints. The segments are easily separated manually after they come out of the printer. The cutting operation for each job can be set for full-cut, half-cut, no cut with marking, or no cut without marking.



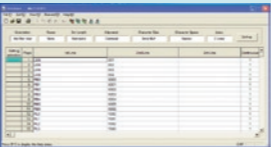
Half cuts can be manually separated easily.

The printer can be linked with PC through USB interface PC Connection Kit



Data can be sent from the PC to the printer, allowing you to create large quantities of data with ease. In addition to the existing original files, the printer can read CSV-format files. This feature greatly reduces the time required for field work.

* Mk2100 only



Smooth Feeding of Tube Tube Feeder

The tube feeder steadily feeds a tube to the printer from the reel so that the tube does not get tangled.

* Mk2100 only



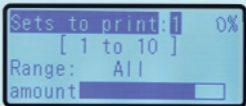
Portable Hard Case Allowing You to Print without Uncasing the Printer

A dedicated hard case is available for handy carrying to the work site. It is made of aluminum and has superior impact resistance for use at poor footholds. In addition, you can print characters without taking the printer out of the case, ensuring smooth work.



Useful display to support your needs

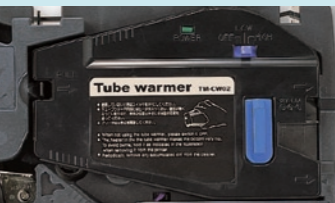
The printer can display the type and amount of ribbon remaining in the ribbon cassette.



Clear Printing at Low Temperatures Tube Warmer

The tube warmer warms cold tubes before printing, ensuring clear printing in an extremely cold environment or in a cold room.

* Printing under low temperature down to 5°C is guaranteed.



Printing Up to Trailing Edge of Tube

The Mk Series printers can print characters up to the edge of each tube to avoid tube waste. This contributes to long-term cost reduction.

