

## Bolts for safety guards for safety switches NM

- For left or right hinged doors



### Features

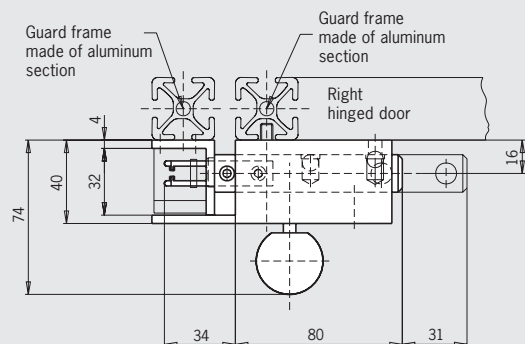
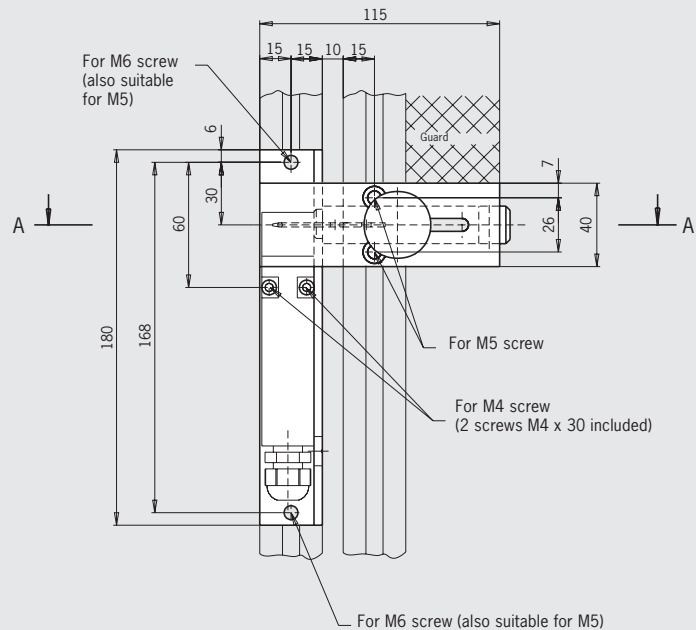
- Easily fitted to standard aluminum profiles and machine covers by screw connection
- Distinctive yellow color for easy recognition
- Symmetrical design for doors hinged on the right or left
- No additional door handle necessary
- Bolt with detent mechanism in opened position
- Through hole on the bolt permits attachment of padlocks

### Notes

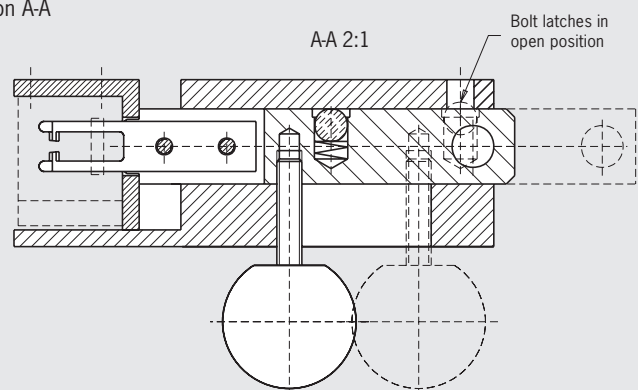
- Actuator and switch bracket included
- Please order safety switch separately

## Bolt for safety switches NM..VZ

### Dimension drawings



### Section A-A



### Ordering table

Designation	Detent mechanism	Version	Order No.
Bolt NM	None	For right or left hinged doors Actuator and switch bracket included	077 233 Bolt NM
Switch bracket NM		Separate	077 245 Switch bracket NM