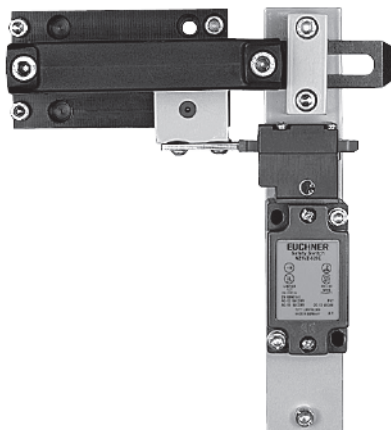


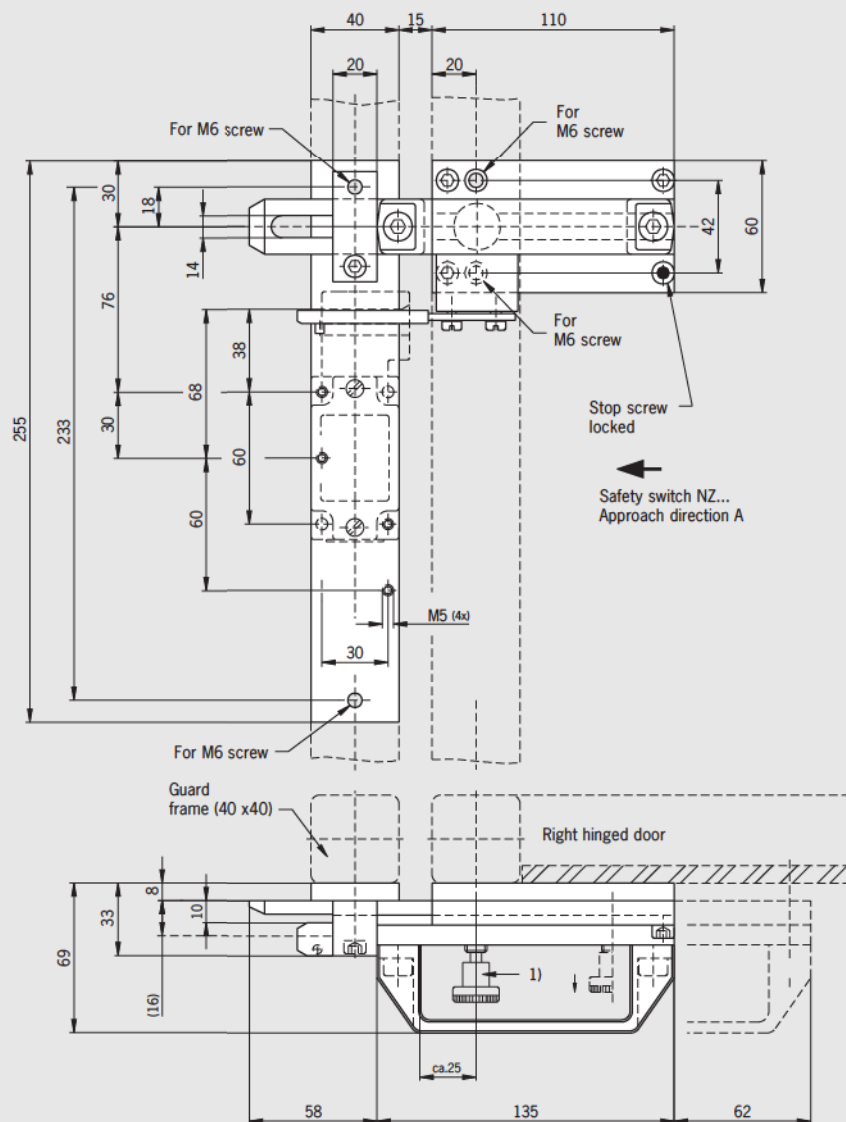
- ▶ For safety switches NZ.VZ und NZ.VZ.VS
- ▶ Bolt NZ-B with ball detent mechanism
- ▶ Bolt NZ-R2 with detent knob
- ▶ For right or left hinged doors



- ▶ **NZ-B** bolt engages in open and closed position
 - ▶ Prevents accidental opening and closing of the bolt
- ▶ **NZ-R2** bolt engages in open and closed position. Unlocked by pulling the detent knob upward

- ▶ Easily fitted to standard aluminum profiles and machine covers by screw connection
- ▶ Easy to use
- ▶ Distinctive yellow color for easy recognition
- ▶ Robust version for heavy doors
- ▶ No additional door handle necessary
- ▶ Slot on the bolt permits attachment of padlocks

Dimension drawings (here: shown with detent knob)



1) Bolt with detent mechanism:
Latches in open position and prevents unintended closing of the bolt.
When the bolt is closed, the knob engages and prevent unintended opening.
Unlocked by pulling the detent knob upward.

Designation	Detent mechanism	Version	Order No.
Bolt NZ-A	None	For right hinged doors, actuator included	057 734 Bolt NZ-A
Bolt NZ-C	None	For left hinged doors, actuator included	057 735 Bolt NZ-C
Bolt NZ-AB	Ball detent mechanism	For right hinged doors, actuator included	083 890 Bolt NZ-AB
Bolt NZ-CB	Ball detent mechanism	For left hinged doors, actuator included	083 892 Bolt NZ-CB
Bolt NZ-AR2	Detent knob	For right hinged doors, actuator included	078 455 Bolt NZ-AR2
Bolt NZ-CR2	Detent knob	For left hinged doors, actuator included	078 456 Bolt NZ-CR2