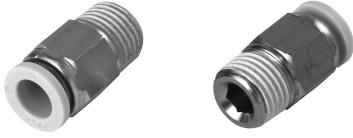


SQ시리즈

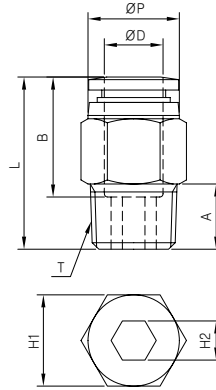
SQH



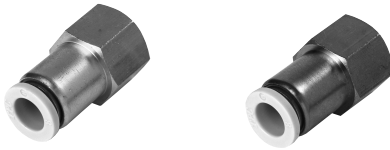
METRIC-BSPT(R)

단위 : mm

MODEL	ØD (Tube Size)	T (Thread Size)	ØP	L	A	B	H1	H2 (Hex.)	Weight (g)
SQH 04-M5A	4	M5×0.8	10.0	20.8	4.6	14.7	Ø10	2	6.0
SQH 04-M5		M5×0.8		20.8	4.0		H10	-	7.0
SQH 04-01S		R 1/8		21.9	8.0		H10	3	9.0
SQH 04-02S		R 1/4		20.9	10.0		H14	3	16.0
SQH 06-M5A	6	M5×0.8	12.0	23.1	4.6	16.4	Ø12	2	10.0
SQH 06-M5		M5×0.8		23.1	4.0		H12	-	10.0
SQH 06-01S		R 1/8		22.4	8.0		H12	4	10.0
SQH 06-02S		R 1/4		21.9	10.0		H14	5	14.0
SQH 06-03S	R 3/8	22.9	11.0	H17	5	25.0			
SQH 08-01S	8	R 1/8	14.0	28.4	8.0	18.4	H14	5	15.0
SQH 08-02S		R 1/4		26.4	10.0		H14	6	16.0
SQH 08-03S		R 3/8		23.9	11.0		H17	6	24.0
SQH 08-04S		R 1/2		29.4	14.0		H19	6	49.0
SQH 10-01S	10	R 1/8	16.1	29.8	8.0	19.6	H17	5	21.0
SQH 10-02S		R 1/4		31.3	10.0		H17	6	24.0
SQH 10-03S		R 3/8		27.4	11.0		H17	8	24.0
SQH 10-04S		R 1/2		29.8	14.0		H19	8	45.0
SQH 12-02S	12	R 1/4	19.0	33.7	10.0	21.9	H19	6	30.0
SQH 12-03S		R 3/8		30.7	11.0		H19	8	29.0
SQH 12-04S		R 1/2		30.2	14.0		H19	8	38.0



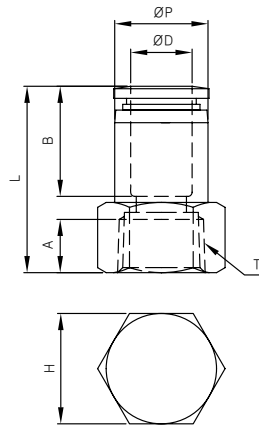
SQF



METRIC-BSPT(R)

단위 : mm

MODEL	ØD (Tube Size)	T (Thread Size)	ØP	L	A	B	H (Hex.)	Weight (g)
SQF 04-01	4	Rc 1/8	10.0	27.0	9.0	14.7	14	17.0
SQF 04-02		Rc 1/4		29.0	11.0		17	22.0
SQF 06-01	6	Rc 1/8	12.0	28.2	9.0	16.4	14	18.0
SQF 06-02		Rc 1/4		30.2	11.0		17	24.0
SQF 06-03		Rc 3/8		31.2	12.0		22	38.0
SQF 08-01	8	Rc 1/8	14.0	29.4	9.0	18.4	14	19.0
SQF 08-02		Rc 1/4		31.4	11.0		17	24.0
SQF 08-03		Rc 3/8		32.4	12.0		22	39.0
SQF 08-04		Rc 1/2		34.4	14.0		24	41.0
SQF 10-01	10	Rc 1/8	16.4	32.5	9.0	19.6	17	31.0
SQF 10-02		Rc 1/4		32.5	11.0		17	26.0
SQF 10-03		Rc 3/8		33.5	12.0		22	41.0
SQF 10-04		Rc 1/2		35.5	14.0		24	43.0
SQF 12-02	12	Rc 1/4	19.0	37.1	11.0	21.9	22	54.0
SQF 12-03		Rc 3/8		37.1	12.0		22	46.0
SQF 12-04		Rc 1/2		39.1	14.0		24	50.0



- PLV
- PSH
- PCV
- MB
- PA
- SSV
- SMS1000
- Accessory
- PER2000
- PER3000
- PVR3000
- PNR4000
- EP
- EM/EL
- ES

- SPSA
- SPSB
- 오토스위치
- SPS

- TXF
- TAD

- SN
- TAS4000
- SP2000
- SQ