

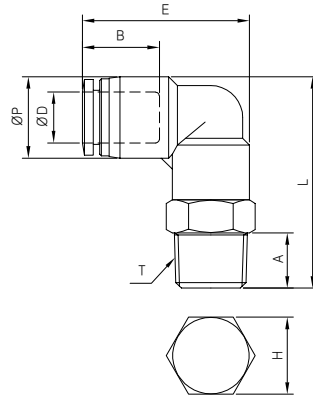
SQ시리즈

SQL



METRIC-BSPT(R)

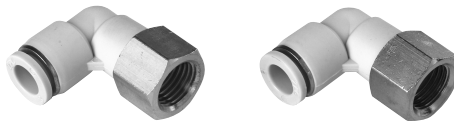
MODEL	ØD (Tube Size)	T (Thread Size)	ØP	L	E	A	B	H (Hex.)	Weight (g)
SQL04-M5	4	M5×0.8	10.5	25.7	23.6	4.0	14.9	10	6.0
SQL04-01S		R1/8		29.7		8.0		10	10.0
SQL04-02S		R1/4		31.7		10.0		14	15.0
SQL06-M5	6	M5×0.8	12.5	28.7	26.3	4.0	16.4	12	7.0
SQL06-01S		R 1/8		32.7		8.0		12	13.0
SQL06-02S		R 1/4		35.7		10.0		14	19.0
SQL06-03S		R 3/8		36.7		11.0		17	27.0
SQL08-01S	8	R 1/8	14.8	35.4	30.3	8.0	18.7	14	18.0
SQL08-02S		R 1/4		38.4		10.0		14	22.0
SQL08-03S		R 3/8		39.4		11.0		17	27.0
SQL08-04S		R 1/2		42.4		14.0		21	43.0
SQL10-01S	10	R 1/8	17.5	37.2	33.0	8.0	20.1	17	26.0
SQL10-02S		R 1/4		40.2		10.0		17	28.0
SQL10-03S		R 3/8		41.2		11.0		17	30.0
SQL10-04S		R 1/2		44.2		14.0		21	48.0
SQL12-02S	12	R 1/4	20.5	44.6	38.1	10.0	22.8	19	40.0
SQL12-03S		R 3/8		45.6		11.0		19	43.0
SQL12-04S		R 1/2		48.6		14.0		21	52.0



- PLV
- PSH
- PCV
- MB
- PA
- SSV
- SMS1000
- Accessory
- PER2000
PER3000
- PVR3000
- PNR4000

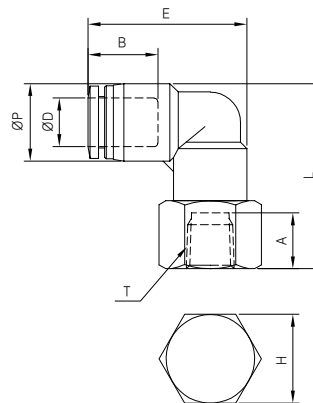
- EP
- EM/EL
- ES

SQLF



METRIC-BSPT(R)

MODEL	ØD (Tube Size)	T (Thread Size)	ØP	L	E	A	B	H (Hex.)	Weight (g)
SQLF 04-M5	4	M5×0.8	10.5	26.7	23.6	8.0	14.9	10	10.0
SQLF 04-01		Rc 1/8		27.7		9.0		14	15.0
SQLF 04-02		Rc 1/4		29.7		11.0		17	20.0
SQLF 06-M5	6	M5×0.8	12.5	29.7	26.3	8.0	16.4	12	16.0
SQLF 06-01		Rc 1/8		30.7		9.0		14	17.0
SQLF 06-02		Rc 1/4		32.7		11.0		17	23.0
SQLF 06-03		Rc 3/8		33.7		12.0		22	36.0
SQLF 08-01	8	Rc 1/8	14.8	33.4	30.3	9.0	18.7	14	19.0
SQLF 08-02		Rc 1/4		35.4		11.0		17	26.0
SQLF 08-03		Rc 3/8		36.4		12.0		22	38.0
SQLF 10-02		Rc 1/4		37.2		11.0		17	29.0
SQLF 10-03	10	Rc 3/8	17.5	38.2	33.0	12.0	20.1	22	42.0
SQLF 10-04		Rc 1/2		40.2		14.0		24	44.0
SQLF 12-02		Rc 1/4		41.6		11.0		19	40.0
SQLF 12-03	12	Rc 3/8	20.5	42.6	38.1	12.0	22.8	22	48.0
SQLF 12-04		Rc 1/2		44.6		14.0		24	49.0



- SPSA
- SPSB
- 오토스위치
- SPS

- TXF
- TAD
- SN
- TAS4000
- SP2000
- SQ