

SP시리즈

SC

SP

SHF
SHS

DC

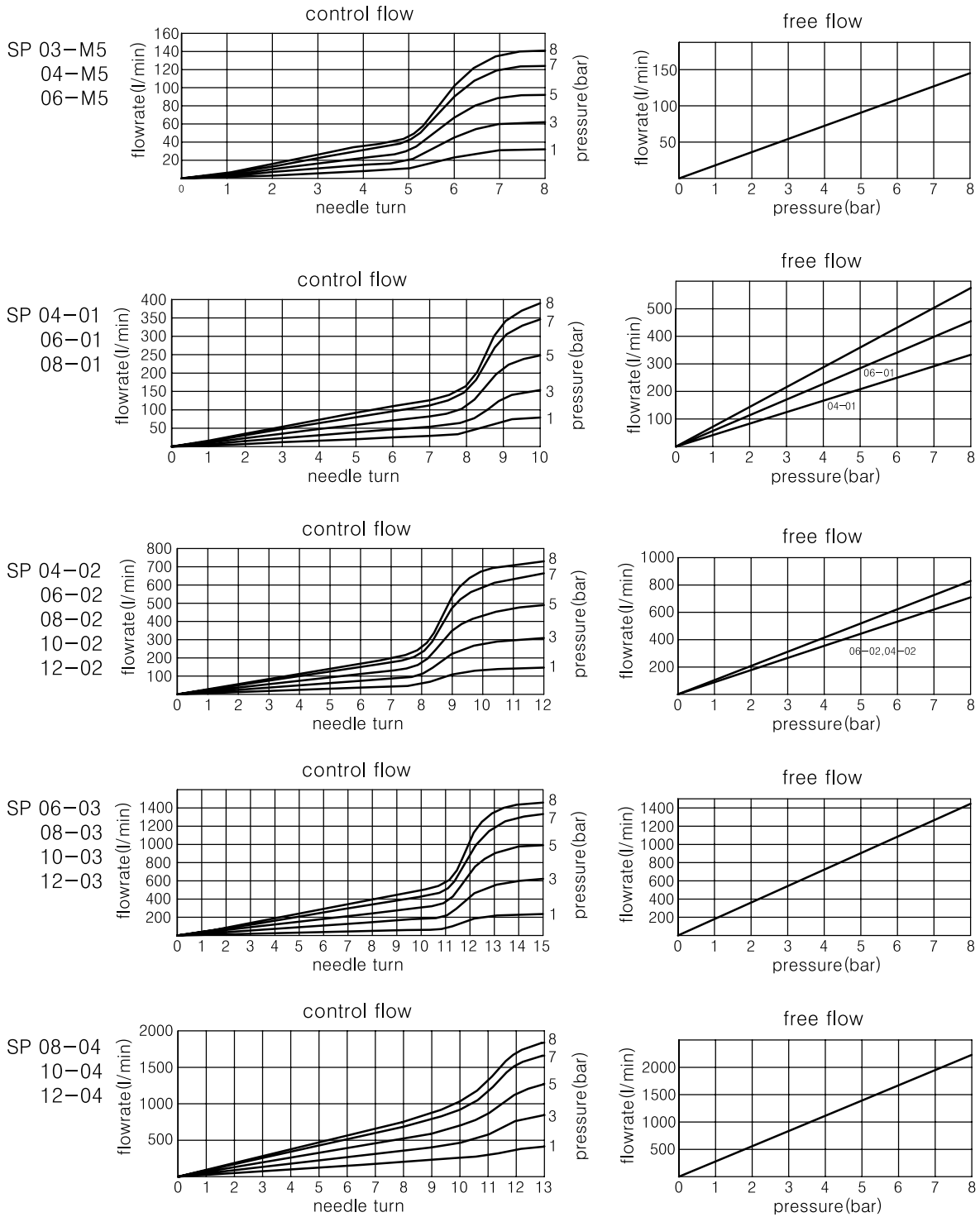
SQ2

ST

TJ

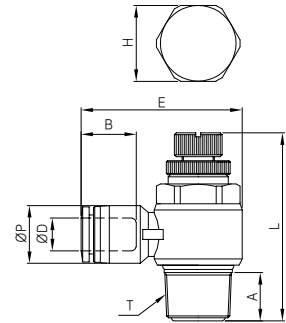
모션컨트롤

SP 유량 그래프



SP시리즈

SP



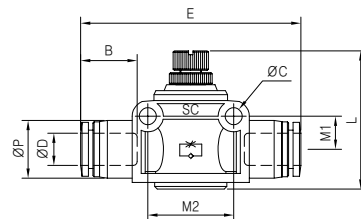
METRIC-BSPT(R)

단위 : mm

MODEL	ØD (Tube Size)	T (Tube Size)	ØP	L		E	A	B	H (Hex.)	Weight (g)
				MIN	MAX					
SP1201F-M5-04	4	M5×0.8	10.5	27.1	29.1	25.4	3.6	14.9	8	9.0
SP2201F-01-04S		R 1/8		35.5	40.7	30.5	8.2		11	20.0
SP2201F-02-04S		R 1/4		40.3	46.6	34.5	11.0		15	36.0
SP1201F-M5-06	6	M5×0.8	12.5	27.1	29.1	27.8	3.6	16.4	8	10.0
SP2201F-01-06S		R 1/8		35.5	40.7	31.3	8.2		11	21.0
SP2201F-02-06S		R 1/4		40.3	46.6	35.3	11.0		15	37.0
SP3201F-03-06S		R 3/8		46.9	54.9	38.8	12.2		19	70.0
SP4201F-04-06S	R 1/2	54.0	60.1	44.9	16.5	24	108.0			
SP2201F-01-08S	8	R 1/8	14.5	35.5	40.7	33.4	8.2	18.7	11	22.0
SP2201F-02-08S		R 1/4		40.3	46.6	37.4	11.0		15	38.0
SP3201F-03-08S		R 3/8		46.9	54.9	40.4	12.2		19	71.0
SP4201F-04-08S		R 1/2		54.0	60.1	46.3	16.5		24	109.0
SP2201F-02-10S	10	R 1/4	17.5	40.3	46.6	38.8	11.0	20.1	15	42.0
SP3201F-03-10S		R 3/8		46.9	54.9	42.1	12.2		19	73.0
SP4201F-04-10S		R 1/2		54.0	60.1	47.3	16.5		24	110.0
SP3201F-03-12S	12	R 3/8	20.5	46.9	54.9	45.2	12.2	22.8	19	75.0
SP4201F-04-12S		R 1/2		54.0	60.1	50.1	16.5		24	113.0

주) SP××01F(Meter-Out)과 SP××11F(Meter-In)의 외관 치수는 동일함.

SPF



METRIC-BSPT(R)

단위 : mm

MODEL	ØD (Tube Size)	ØP	L		E	ØC	B	M1	M2	Weight (g)
			MIN	MAX						
SP100F-04	4	10.5	26.4	28.9	44.8	3.2	14.9	5.6	15.4	13.0
SP200F-06	6	12.5	33.5	37.9	49.6	4.3	16.4	8.0	20.4	28.0
SP205F-08	8	14.8	35.5	41.5	56.4	4.4	18.7	8.5	22.0	45.0
SP300F-10	10	17.5	40.7	48.7	61.4	4.3	20.1	10.3	28.1	84.0
SP300F-12	12	20.5	45.0	53.5	70.3	4.4	22.8	12.1	32.0	123.0