

ProxProbe™ Adapter



Convert standard proximity sensors into probe-style switches ProxProbe's "ball end" rod reaches into tight areas and offers a very compact and highly adjustable mechanical sensing device.



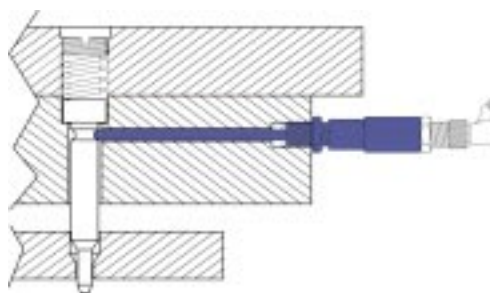
Features

- Accepts standard shielded 8 or 12mm sensors
- Spring-loaded probe with Oilite® bearing
- Wide variety of probe lengths and diameters
- Tool steel probe

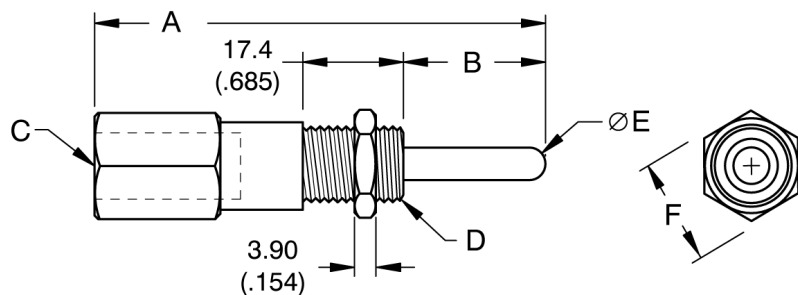
Benefits

- Accurate and compact sensing
- Rapid installation and simple to adjust
- Reliable and versatile solid-state output
- Offers new control input options

Typical application: Shown at the right, a ProxProbe™ is used to monitor the misfeed punch in a die set. Should a misfeed occur, ProxProbe™ signals the control system to shutdown. Mounting is easy and adjustments are both quick and precise with ProxProbe™.



Model	A	B	C	D	E	F	Probe Travel ¹
PPA-08-25-03	75.6 (2.98)	25.4 (1.00)	M8 x 1 to a depth of 20.0 (0.79)	M8 x 1	3.18 (.125)	11.1 (0.44)	Maximum: 1.93 (.076)
PPA-08-50-03	99.6 (3.92)	50.8 (2.00)					For activation: varies due to sensor's sensing range, but typically 0.13 (.005) to 0.25(.010)
PPA-08-75-03	126 (4.96)	76.2 (3.00)					Use a sensor with a standard "shielded" sensing range (S _n = 1mm) for best results.
PPA-08-100-03	150 (5.91)	102 (4.00)					
PPA-12-25-03	75.6 (2.98)	25.4 (1.00)	M12 x1 to a depth of 18.0 (0.71)	M12 x1	3.18 (.125)	15.8 (0.62)	Maximum: 1.93 (.076)
PPA-12-50-03	99.6 (3.92)	50.8 (2.00)					For activation: varies due to sensor's sensing range, but typically 0.13 (.010) to 0.38(.015)
PPA-12-75-03	126 (4.96)	76.2 (3.00)					Use a sensor with a standard "shielded" sensing range (S _n = 2mm) for best results.
PPA-12-100-03	150 (5.91)	102 (4.00)					
PPA-12-25-06	75.6 (2.98)	25.4 (1.00)			6.35 (.250)		
PPA-12-50-06	99.6 (3.92)	50.8 (2.00)					
PPA-12-75-06	126 (4.96)	76.2 (3.00)					
PPA-12-100-06	150 (5.91)	102 (4.00)					



Notes: **1)** Damage to both probe and sensor may result if specified maximum probe travel is exceeded. **2)** Standard ProxProbe™ requires 252grams (9oz.) for sensor activation. Optional "heavy" spring rate requires 1120grams (40oz) to activate sensor (add an "H" to end of model number). **3)** For use with shielded type proximity sensors only. **4)** Thread sensor into ProxProbe™ only until proper "On/Off" triggering is achieved, do not thread sensor in fully or damage will occur. **5)** Custom probes are readily quoted, please contact factory for different lengths, diameters, threading and attachments.