

PTM Series D56mm LED 3 Colors in 1 Tower Light



Versatile, cost and energy efficient LED Signal Tower for every need.



Feature

- 3 colors in 1 LED modular components
- Bright & even light distribution through prism-cut lenses
- Fast & easy assembly with inter-locking construction
- 6 base mount options
- Optional 85dB Buzzer (fixed or adjustable volume)
- IP65 rated
- RoHS compliant



Ordering Information

PTM- A P F - 1 02 - RYG - B (V)

① ② ③ ④ ⑤ ⑥ ⑦ ⑧

* Options

1. Body Unit

S	Flat Based Body	Code 7
A	Pole Mount Standard Body	Code 7 + Code 10
D	Short Body	Code 6
T	Terminal Body	Code 15
L	Small Surface Body	Code 17

Note: "D", "L" Type - Power Supply 24V AC/DC Only

2. Mounting Style

C	Surface Mount	Code 18
G	Plastic mount base (MAM-B070B)	Code 8 + Code 16
P	Pole + Plastic mount base (MAM-B070D)	Code 8 + Code 11
R	Pole + Rotate plastic mount base (MAM-B070R)	Code 8 + Code 20
M	Pole + Plastic M20 screw mount base (MAM-B025)	Code 8 + Code 9
W	Pole + Wall Mount Bracket (MAP-DS40)	Code 8 + Code 12
D	Pole + Aluminum Pole mount base (MAM-DS32)	Code 8 + Code 22
J	Pole Adjustable Type	Code 21 + Code 11

Note: R Type Mount base - 180-degree revolution

3. Light Style

	Steady Light
F	Steady + Flashing Light
B	Buzzer (Fixed Sound)
V	Buzzer (Adjustable Sound)
Z	Steady + Flashing + Buzzer (Fixed Sound)
X	Steady + Flashing + Buzzer (Adjustable Sound)

4. Number of Stacks

1	1 Stack
----------	---------

5. Power Supply

02	24V AC/DC
FF	90~240V AC

6. LED Colors

RYG	Red, Yellow, Green
RGB	Red, Green, Blue

Options

7. Body Colors

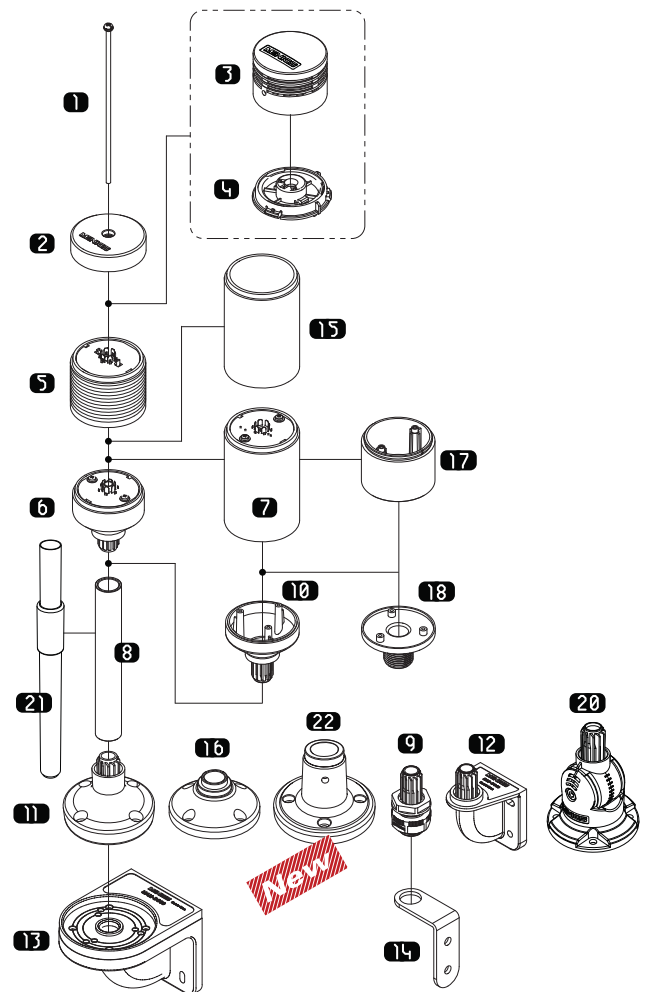
B	Black
----------	-------

Note: Standard Body Color - White Ivory.

8. Light Style

(V)	Continuous Flashing Flashing Cycle: (3~4 Times/Second)
(C)	Buzzer Continuous sound

Exploded View / Part Code



See Page 40 ~ 42
for Mounting Options and Accessories.

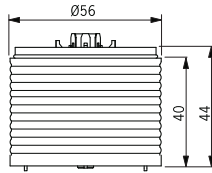
Specifications

Body Units

Operation/Function	Steady, Flashing, Buzzer
Power Supply	AC/DC 24V, AC 90 ~ 240V 50/60Hz
Lens Color	Clear
Maximum Tier	1
Flash Rate	80 times/minute, 3~4 times/Second (options - V type)
Vibration	0.75mm at 10~55Hz
Ambient Temperature	-15°C~40°C
Storage Temperature	-40°C ~ 70°C
Ambient Humidity	45~85% RH
Degree of Protection	IP65 / IP40 (with Buzzer)
Approvals	CE, UL, RoHS
Recommended Wire Size	1007 UL / 22AWG

LED Modules

LED Color	3 Colors in 1			
	R / Y / G		R / G / B	
Current (24V)	R	30mA / 0.72W	R	30mA / 0.72W
	Y	30mA / 0.72W	G	35mA / 0.80W
	G	35mA / 0.80W	B	30mA / 0.72W
Weight	Standard Module: 42.8g			

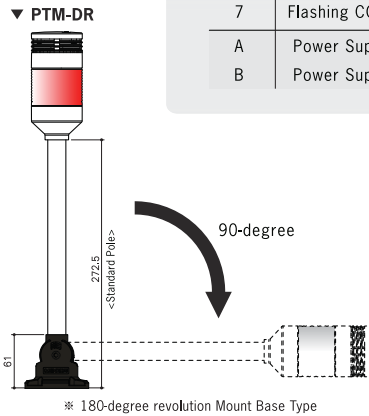
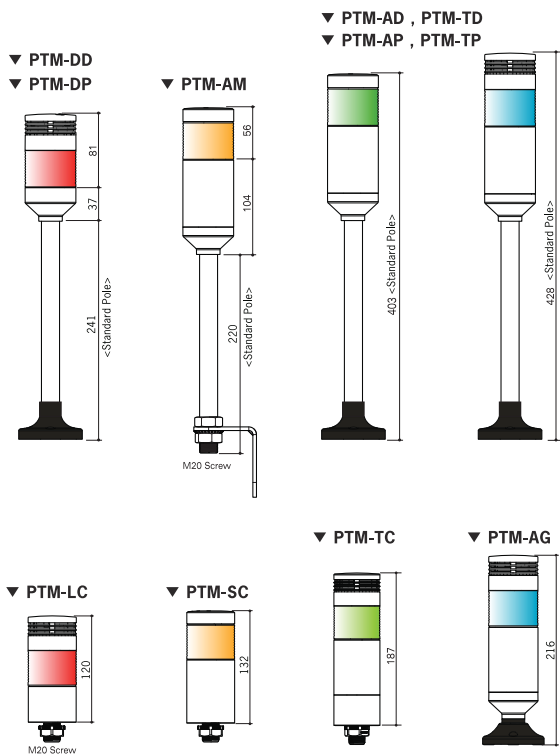


Buzzer Kits

Type	Standard Buzzer Sound - pi pi pi pi		
Model	MPZ-56F	MPZ-56G	MPZ-56H
Level Style	Fixed Sound	Adjustable Sound Level	Adjustable Sound Level
Sound Level	85dB/300mm	10~85dB/300mm	10~100dB/1M
Current / Power	30mA / 0.72W	30mA / 0.72W	150mA / 3.6W

Dimensions <Unit: mm>

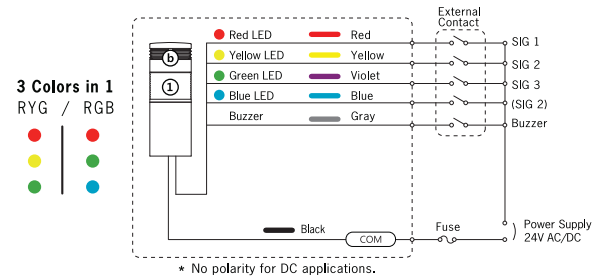
▶ Standard Pole Length : 225mm



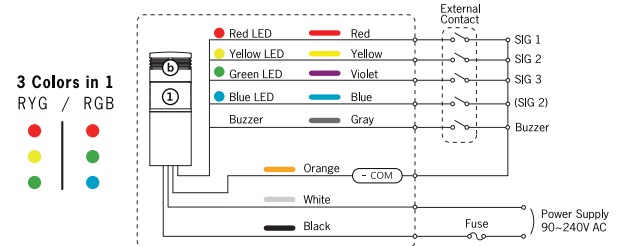
* The above specifications are changeable at anytime without notice.

Wiring Diagram

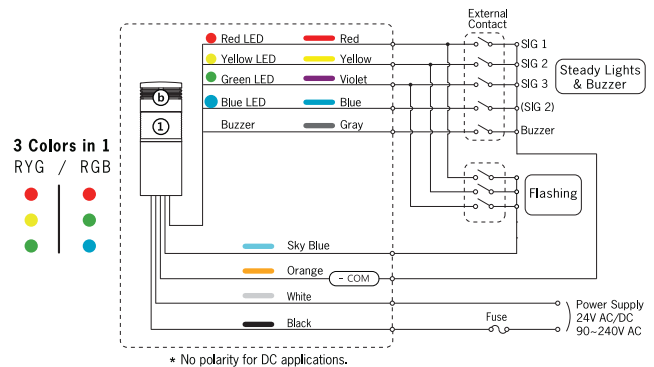
24V AC/DC Steady Lights (with Buzzer)



90 ~ 240V AC Steady Lights (with Buzzer)

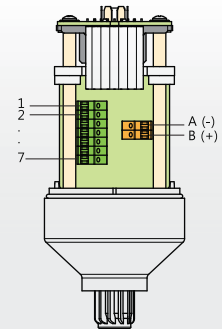


24VAC/DC, 90~240V AC Steady or Flashing Lights (with Buzzer)



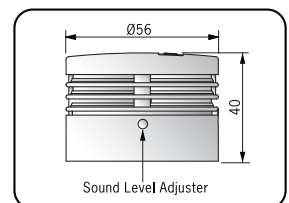
Terminal Type Connections

Pin #	Description
1	Red LED
2	Yellow LED
3	Green LED
4	Blue LED
5	Buzzer
6	Steady COM
7	Flashing COM
A	Power Supply (-)
B	Power Supply (+)



Recommended Wire Size
 UL 1007 AWG 22~16
 UL 1430 AWG 22~16
 * Use 75°C CU Wire only.

Buzzer Kits Dimensions

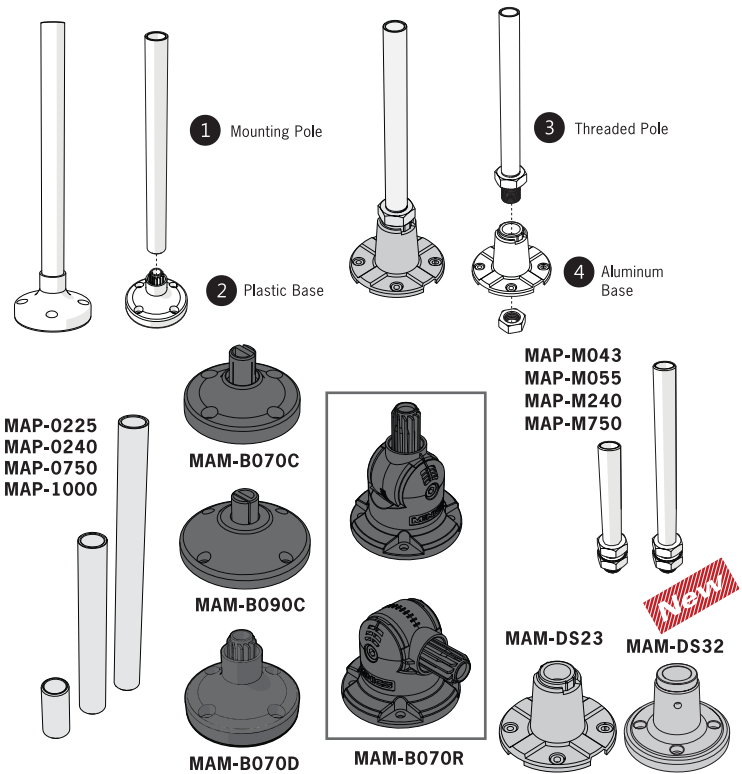


Tower Light Mounting Options

PTE , PTM , PTD , PME , MT5C/8C , MT4B/5B/8B

Pole Mounting with Base

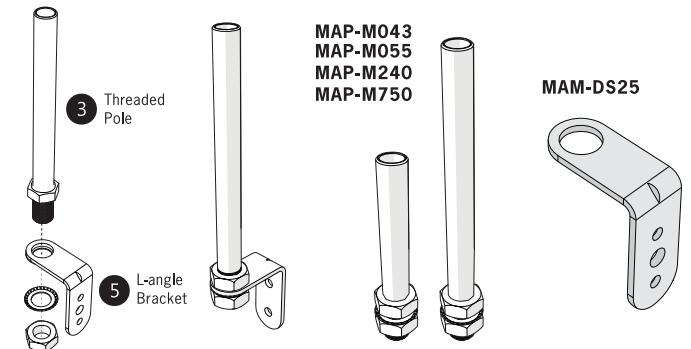
No	Part #	Description
1	MAP-0225	Ø20mm, 8.86 in (Length 225mm) Pole
	MAP-0240	Ø20mm, 9.45 in (Length 240mm) Pole
	MAP-0750	Ø20mm, 29.53 in (Length 750mm) Pole
	MAP-1000	Ø20mm, 39.37 in (Length 1000mm) Pole
2	MAM-B070C	Ø70mm Plastic Base
	MAM-B070D	Ø70mm Plastic Base With Water-Proof Rubber Gasket
	MAM-B070R	Ø70mm Plastic Base With 180° Rotating Pole Base
	MAM-B090C	Ø90mm Plastic Base
3	MAP-M043	Ø20mm, 1.69 in (Length 43mm) Pole Threaded pole With 2 Nut (M20 x 1.5Pitch)
	MAP-M055	Ø20mm, 2.17 in (Length 55mm) Pole Threaded pole With 2 Nut (M20 x 1.5Pitch)
	MAP-M240	Ø20mm, 9.45 in (Length 240mm) Pole Threaded pole With 2 Nut (M20 x 1.5Pitch)
	MAP-M750	Ø20mm, 29.53 in (Length 750mm) Pole Threaded pole With 2 Nut (M20 x 1.5Pitch)
4	MAM-DS23	Ø18, 20mm Aluminum Base - Die Casting
	MAM-DS32	Ø20mm Aluminum pole mount base - Die Casting



* Aluminum Pole Length Options

L-angle Mounting with Bracket

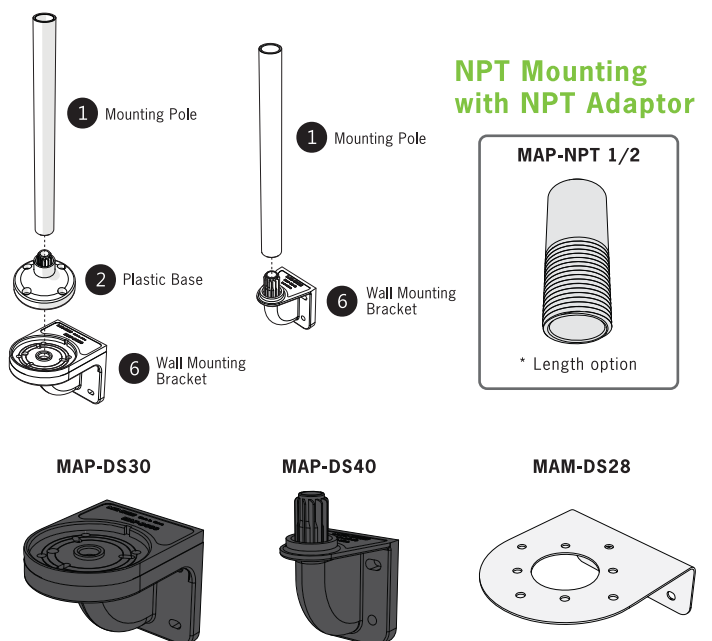
No	Part #	Description
3	MAP-M043	Ø20mm, 1.69 in (Length 43mm) Pole Threaded pole With 2 Nut
	MAP-M240	Ø20mm, 9.45 in (Length 240mm) Pole Threaded pole With 2 Nut
	MAP-M750	Ø20mm, 29.53 in (Length 750mm) Pole Threaded pole With 2 Nut
5	MAM-DS25	L-angle Bracket



* Aluminum Pole Length Options

Wall Mounting with Bracket

No	Part #	Description
1	MAP-0225	Ø20mm, 8.86 in (Length 225mm) Pole
	MAP-0240	Ø20mm, 9.45 in (Length 240mm) Pole
	MAP-0750	Ø20mm, 29.53 in (Length 750mm) Pole
	MAP-1000	Ø20mm, 39.37 in (Length 1000mm) Pole
2	MAM-B070C	Ø70mm Plastic Base
	MAM-B070D	Ø70mm Plastic Base With Water-Proof Rubber Gasket
6	MAP-DS30-BLK	Plastic Wall Mounting Bracket, Black Color (Pole & Base required)
	MAP-DS30-BGE	Plastic Wall Mounting Bracket, Beige Color (Pole & Base required)
	MAP-DS40-BLK	Plastic Wall Mounting Bracket, Black Color (Pole & Base required)
	MAP-DS40-BGE	Plastic Wall Mounting Bracket, Beige Color (Pole & Base required)
	MAM-DS28	Matal Wall Mounting Bracket (Pole & Base required)



* Aluminum Pole Length Options

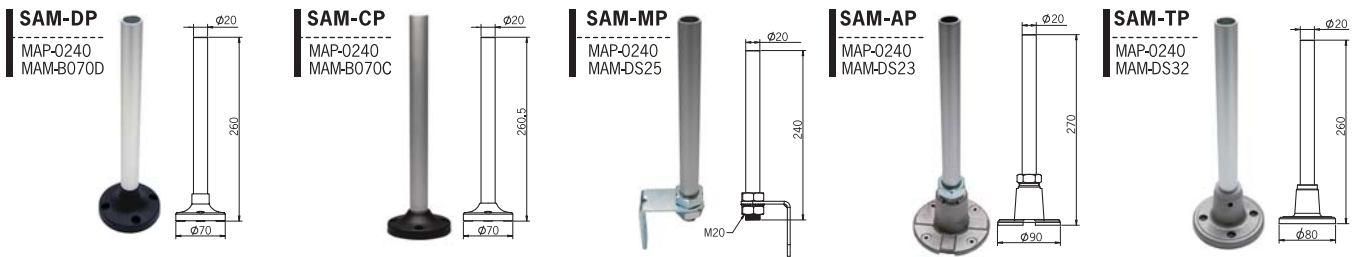
Accessories

Ordering information and Dimensions (UNIT : mm)

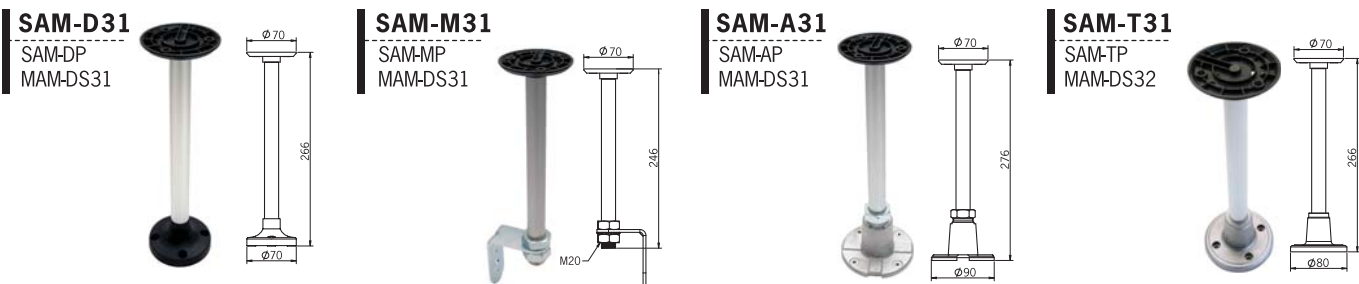
Semi-assembled pole mounting base

LED type: PTE, PTM, PTD, PME series

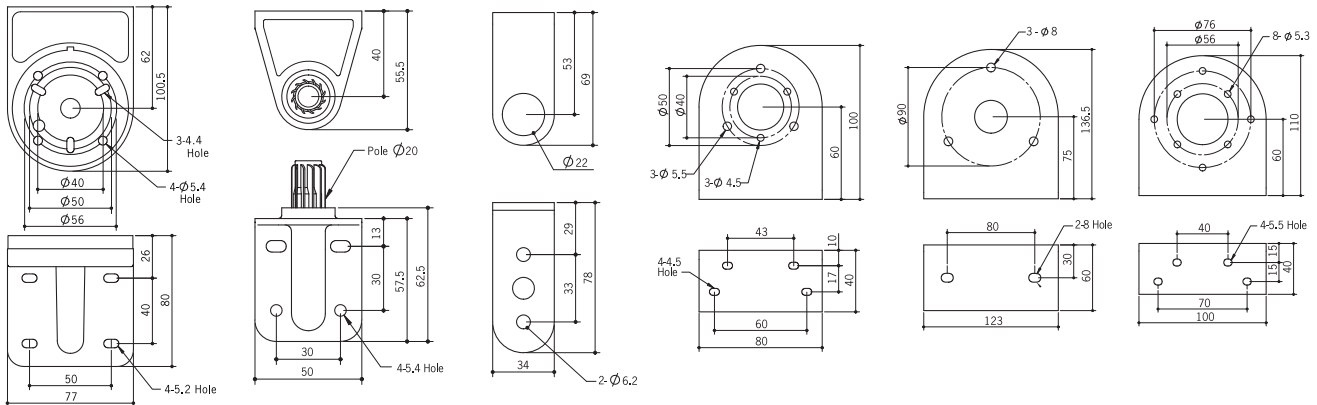
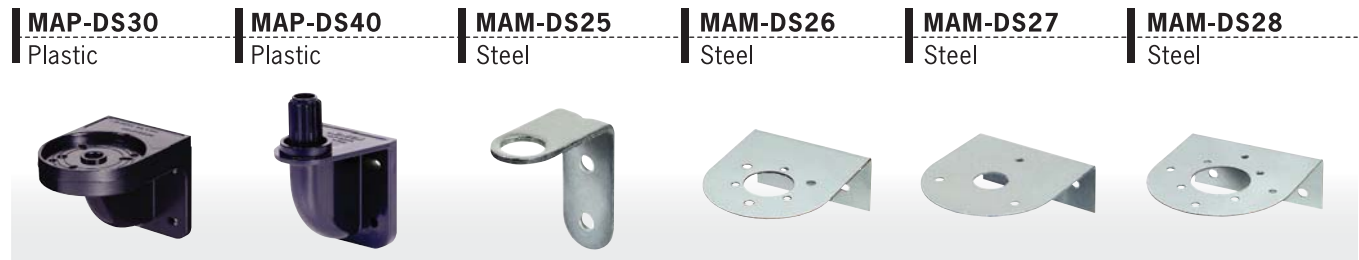
Bulb type: MT4, MT5, MT8 series



MS86 series dedicated part

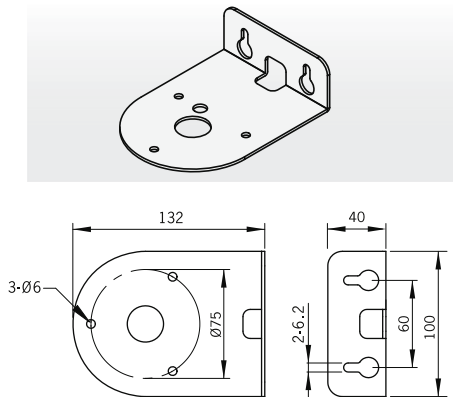


Wall Mounting Bracket



MAM-DS29

Steel



Model

Available Product

MAP-DS30-BLK	Plastic Wall Mounting Bracket, Black Color
MAP-DS30-BGE	Plastic Wall Mounting Bracket, Beige Color
MAP-DS40-BLK	Plastic Wall Mounting Bracket, Black Color
MAP-DS40-BGE	Plastic Wall Mounting Bracket, Beige Color
MAM-DS25	L-angle Steel Bracket
MAM-DS26	Wall Mounting Bracket (ML and AS Series, MS86 Series)
MAM-DS27	Wall Mounting Bracket (AVG Series)
MAM-DS28	Wall Mounting Bracket (Tower Light)
MAM-DS29	Wall Mounting Bracket (MS115 Series)



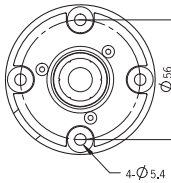
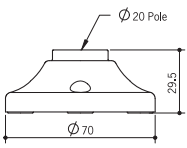
Accessories

Ordering information and Dimensions (UNIT : mm)

Mount Base

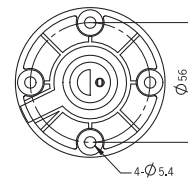
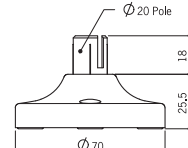
MAM-B070B

Plastic



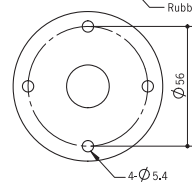
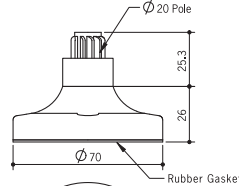
MAM-B070C

Plastic



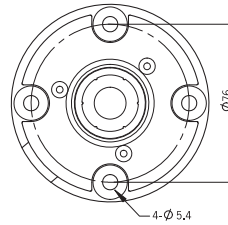
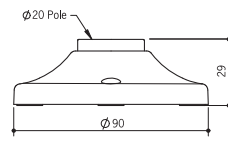
MAM-B070D

Plastic



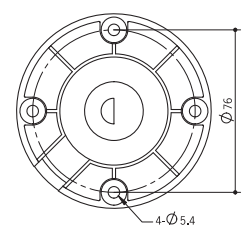
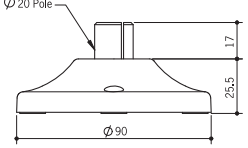
MAM-B090B

Plastic



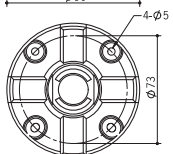
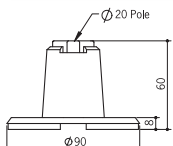
MAM-B090C

Plastic



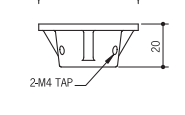
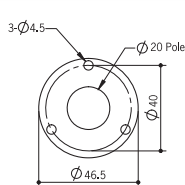
MAM-DS23

Aluminum



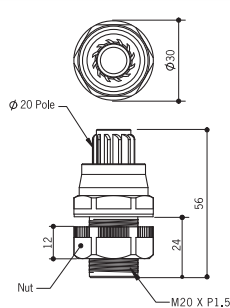
MAM-DS24

Aluminum



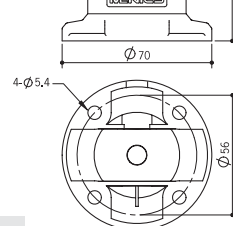
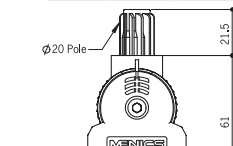
MAM-I025

Plastic



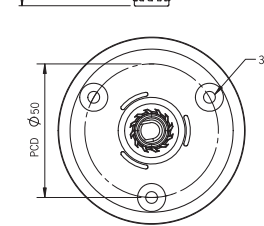
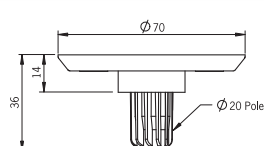
MAM-B070R

Plastic



MAM-DS31

Plastic



Model

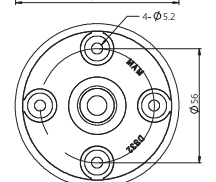
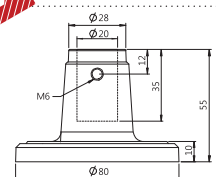
Available Product

MAM-B070B	Tower Light Diameter 45, 56mm Series Base Bracket (Direct mounting)
MAM-B070C	Tower Light Diameter 45, 56mm Series Base Bracket
MAM-B070D	Tower Light Diameter 45, 56mm Series Base Bracket
MAM-B070R	Tower Light Diameter 45, 56mm Series Rotaet Base Bracket (180°)
MAM-B090B	Tower Light Diameter 86mm Series Base Bracket (Direct mounting)
MAM-B090C	Tower Light Diameter 86mm Series Base Bracket
MAM-I025	Ø20mm Plastic Pole Adaptor, Screw:M20X1.5P, Color: Ivory
MAM-DS23	Ø20mm Aluminum pole mount base - Die Casting
MAM-DS24	Ø20mm Aluminum Pole Adaptor - - Die Casting
MAM-DS31	MS86 Series, Plastic Pole Adaptor
MAM-DS32	Ø20mm Aluminum pole mount base - Die Casting

MAM-DS32

Aluminum

New



ACCESSORIES