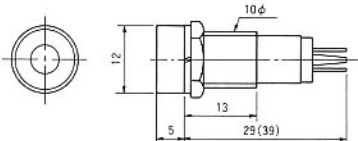


■ METAL TYPE

● DOH-10T DC.24V, 12V, 5V



R.G.O.W

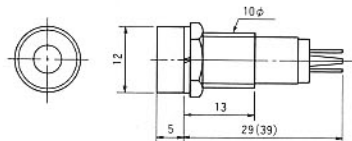


(39) : White Panel Cut φ 10.2

● DOH-10TB DC.24V, 12V, 5V



R.G.O.W

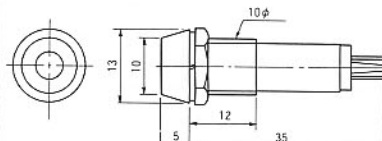


(39) : White Panel Cut φ 10.2

● DO-10HJT DC.24V, 12V, 5V



R.G.O.W

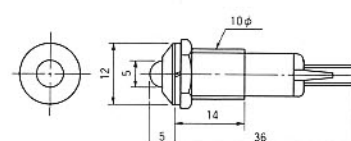


Panel Cut φ 10.2

● DZ-10FM DC.24V, 12V, 5V



R.G.O. Bu

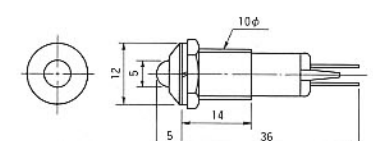


Panel Cut φ 10.2

● DZ-10FMB DC.24V, 12V, 5V



R.G.O. Bu



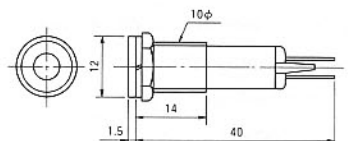
Panel Cut φ 10.2

■ METAL TYPE

● DZ-10FH DC.24V, 12V, 5V



R.G.O. Bu

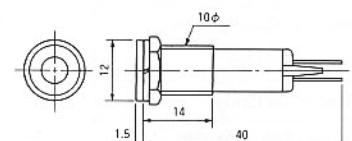


Panel Cut φ 10.2

● DZ-10FHB DC.24V, 12V, 5V



R.G.O. Bu



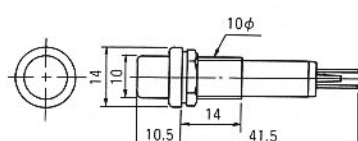
Panel Cut φ 10.2

■ MOLD TYPE

● DO-11TP DC.24V, 12V, 5V



R.G.O.W

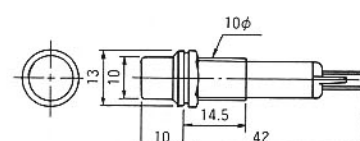


Panel Cut φ 10.2

● DO-11TPB DC.24V, 12V, 5V



R.G.O.W

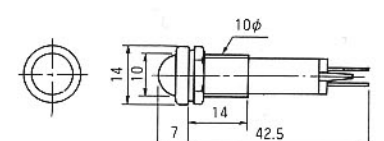


Panel Cut φ 10.2

● DO-11MP DC.24V, 12V, 5V



R.G.O.W



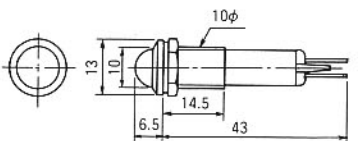
Panel Cut φ 10.2

■ MOLD TYPE

● DO-11MPB DC.24V, 12V, 5V



R.G.O.W

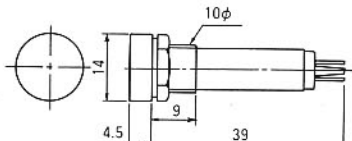


Panel Cut φ 10.2

● DO-11HJP DC.24V, 12V, 5V
(DO-10H-2)



R.G.O.W

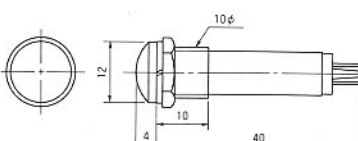


Panel Cut φ 10.2

● DO-10M DC.24V, 12V, 5V



R.G.O.W

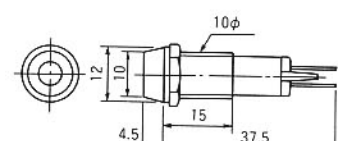


Panel Cut φ 10.2

● DO-10HBTS DC.24V, 12V, 5V



R.G.O

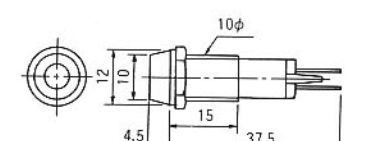


Panel Cut φ 10.2

● DO-10HBT DC.24V, 12V, 5V




R.G.O



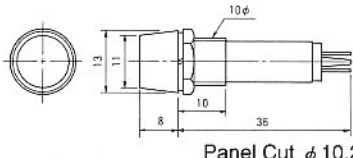
Panel Cut φ 10.2

MOLD TYPE

● DO-5BH DC.24V, 12V, 5V




R.G.O.W

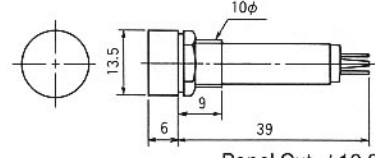


Panel Cut φ 10.2

● DO-5BP DC.24V, 12V, 5V (DO-10M-1)




R.G.O.W

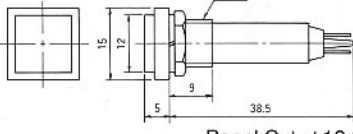


Panel Cut φ 10.2

● DO-10KF DC.24V, 12V, 5V




R.G.O.W

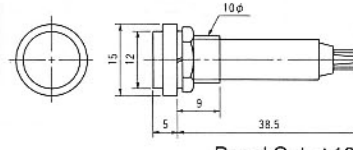


Panel Cut φ 10.2

● DO-10HF DC.24V, 12V, 5V



R.G.O.W



Panel Cut φ 10.2

METAL TYPE

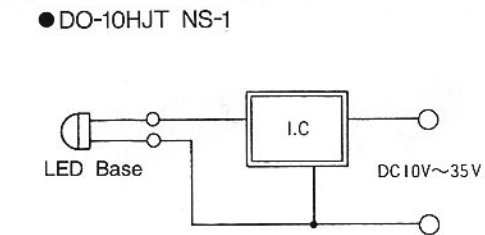
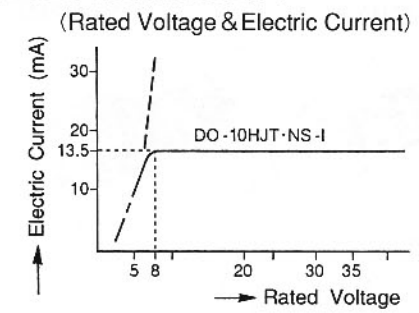
● DO-10HJT NS-1 DC.10V~35V



R.G.O.W



Panel Cut φ 10.2

INSIDE CONSTRUCTION

A SPECIAL QUALITY

DOH-10T(B), DO-10HJT NS-1

	R	G	O	W
Lens Color	-	-	-	W
Lighting Color	R	G	O	A
Color of LED	R	G	O	A

DO-10HJT

	R	G	O	W
Lens Color	C	C	C	W
Lighting Color	R	G	O	A
Color of LED	R	G	O	A

DZ-10FH, 10FM

	R	G	O	W
Lens Color	-	-	-	W
Lighting Color	R	G	O	A
Color of LED	R	G	O	A

**DO-11TP(B), 11MP(B), 10M
DO-11HJP, 5BP, 5BH, 10KF, 10HF**
DO-10HBT(B)

	R	G	O	W
Lens Color	-	-	-	W
Lighting Color	R	G	O	A
Color of LED	R	G	O	A

	R	G	O	W
Lens Color	R	G	O	W
Lighting Color	R	G	O	A
Color of LED	R	G	O	A

(R : Red, G : Green, O : Orange, W : White, C : Clear, A : Amber)

TYPICAL SPECIFICATIONS

	DOH-10T(B) DO-10HJT	DZ-10FM(B) DZ-10FH(B)	DO-11TP(B) DO-11MP(B)	DO-11HJP,10M DO-5BH,5BP	DO-10HBT DO-10HBT(S)	DO-10KF DO-10HF	DO-10HJT NS-1
Using Voltage	DC24V(22-24V), DC12V(11-12V), DC5V(4.5-5V)						DC8V-35V
Electric Current	DC15mA	DC11mA	DC18mA	DC19mA	DC15mA	DC19mA	5V-5mA, 8V-13.5mA
Life	50,000Hours						
Lighting Color	R.G.O.A	R.G.O.Blue	Red,Green,Orange,Amber	R.G.O	Red,Green,Orange,Amber		
Allowable Panel Thickness	1mm~10mm	1mm~10mm	1mm~7mm	1mm~7mm	1mm~7mm	1mm~6mm	1mm~10mm
Terminal Connection	Soldering Type(P Side-Red or White Mark)						
Inside Resistor	1/2W. Carbon Resistor		1W. Resistor	1/2W.	1W		
Material of Body	Chrome-Plated Brass		Polycarbonate				Chrome-Plated
Die-electric Strength	1,000V. 1 Minute	2,000V. 1 Minute					1,000V. 1 Minute
Insulating Resistance	100MΩ . (500V. Megger)						
Weight	7g~8g	8g	6g	3g~5g	3g~4g	4g~5g	7g~8g

★ ORDER

<u>DO-10HF</u>	<u>DC24V</u>	<u>R</u>	<u>100PCS</u>
Basic Type	Voltage	Color	Amount