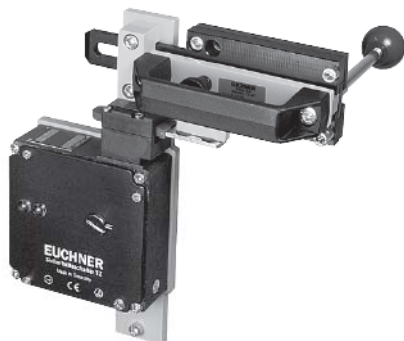


## Bolts for safety guards

- ▶ For safety switches with escape release TZ...C1815 and TZ...C1828
- ▶ Lever for escape release from the danger area
- ▶ For right or left hinged doors



### Special features

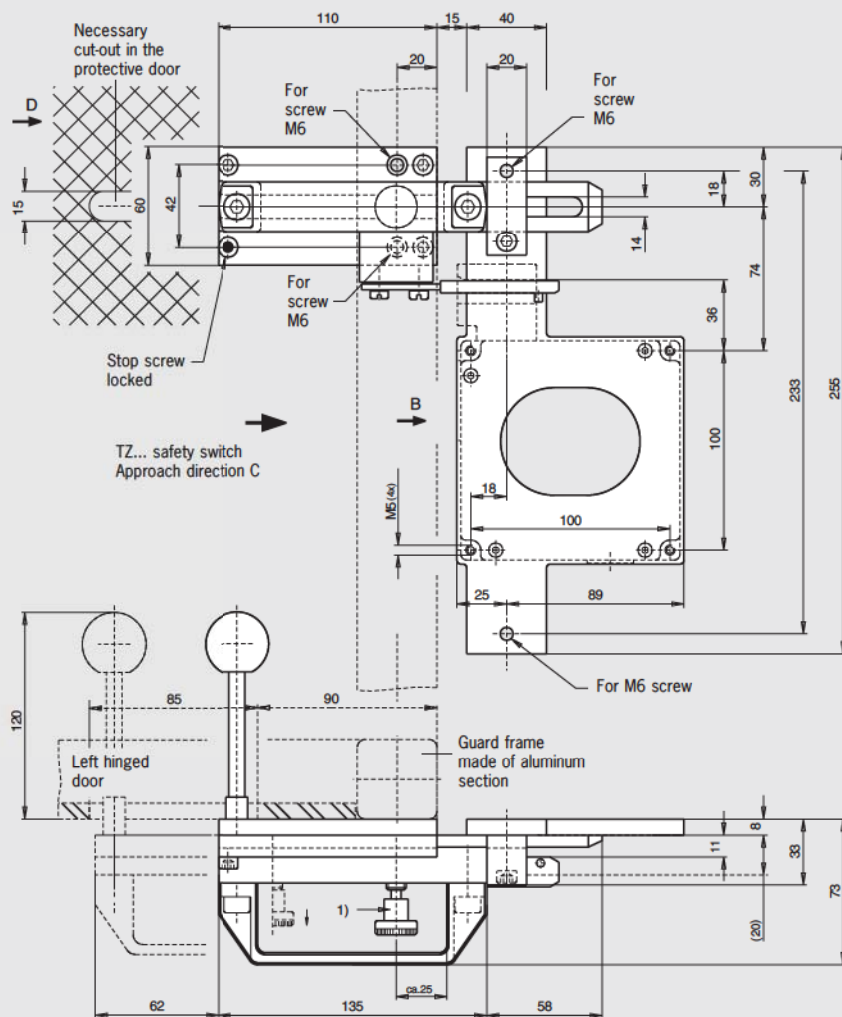
- ▶ Bolt with detent mechanism
  - ▶ The bolt latches in open position to prevent unintended closing

## Features

- ▶ Easily fitted to standard aluminum profiles and machine covers by screw connection
- ▶ Distinctive yellow color for easy recognition
- ▶ Robust version for heavy doors
- ▶ No additional door handle necessary
- ▶ Slot on the bolt permits attachment of padlocks

### Bolt for safety switches TZ...C1815 and TZ...C1828

## Dimension drawings



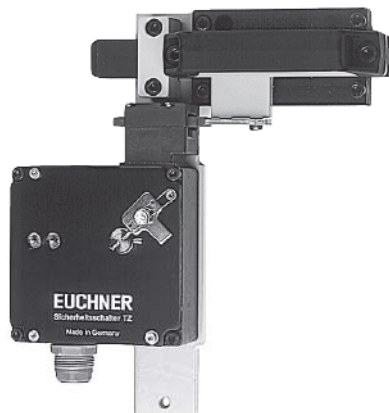
1) Bolt with detent mechanism:  
Latches in open position and prevents unintended closing of the bolt.  
Unlocked by pulling the detent knob upward.

### Ordering table

Designation	Detent mechanism	Version	Order No.
<b>Bolt TZ-AF</b>	Detent knob	For right hinged doors, escape release from the danger area, actuator and switch bracket included	<b>076 200</b> Bolt TZ-AF
<b>Bolt TZ-CF</b>	Detent knob	For left hinged doors, escape release from the danger area, actuator and switch bracket included	<b>076 199</b> Bolt TZ-CF

## Bolts for safety guards

- ▶ For safety switches TZ
- ▶ Optional stainless steel bolt, 1.4301
- ▶ For right or left hinged doors



### Features

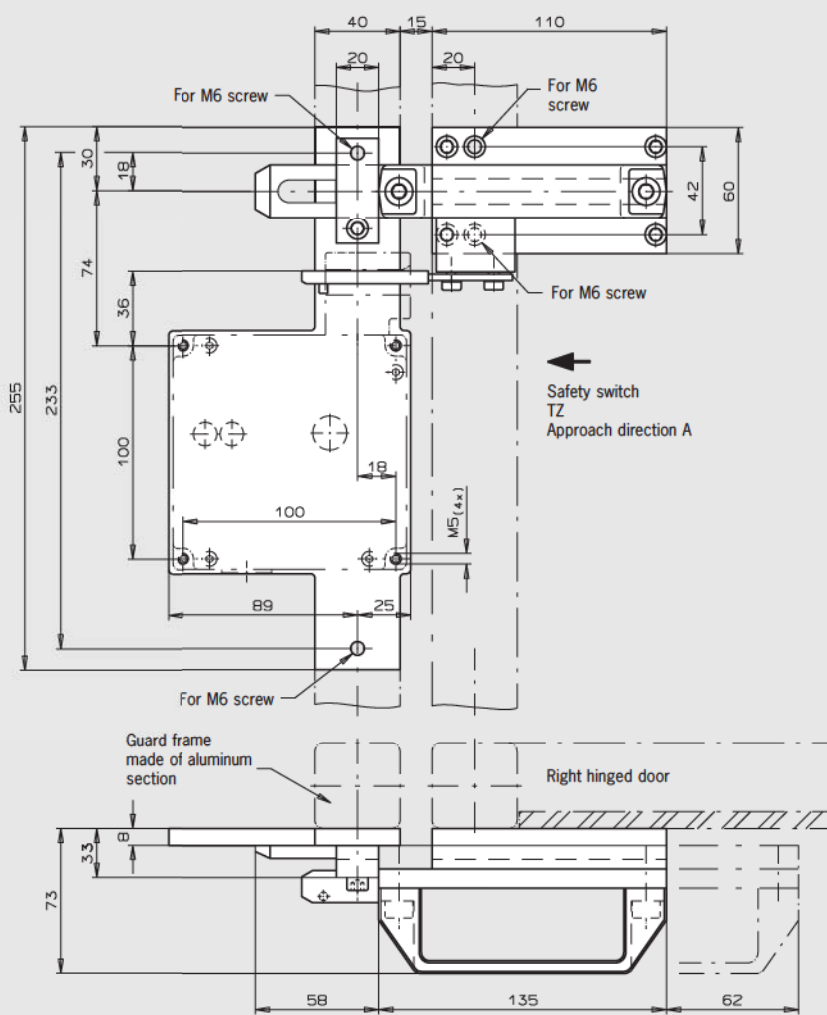
- ▶ Easily fitted to standard aluminum profiles and machine covers by screw connection
- ▶ Easy to use
- ▶ Distinctive yellow color for easy recognition
- ▶ Robust version for heavy doors
- ▶ No additional door handle necessary
- ▶ Slot on the bolt permits attachment of padlocks

### Version in stainless steel 1.4301

- ▶ Suitable for use in the chemical and foodstuff industries
- ▶ Screw material stainless steel V2A
- ▶ Handle material polypropylene
- ▶ Slide strip material polyethylene

## Bolts for safety switches TZ

### Dimension drawings



### Ordering table

Designation	Detent mechanism	Version	Order No.
<b>Bolt TZ-A</b>	None	For right hinged doors actuator and switch bracket included	<b>057 736</b> Bolt TZ-A
<b>Bolt TZ-C</b>	None	For left hinged doors actuator and switch bracket included	<b>057 737</b> Bolt TZ-C
<b>Bolt TZ-A-NIRO</b>	None	For right hinged doors, bolt made of stainless steel 1.4301, actuator and switch bracket included	<b>079 798</b> Bolt TZ-A-NIRO
<b>Bolt TZ-C-NIRO</b>	None	For left hinged doors, bolt made of stainless steel 1.4301, actuator and switch bracket included	<b>079 799</b> Bolt TZ-C-NIRO
<b>Bolt TZ-A-NIRO-C2101</b>	None	For right hinged doors, bolt made of stainless steel 1.4301, screws made of stainless steel V2A, handle and slide strips made of stainless steel 1.4301, actuator and switch bracket included (similar to figure)	<b>096 057</b> Bolt TZ-A-NIRO-C2101
<b>Bolt TZ-C-NIRO-C2101</b>	None	For left hinged doors, bolt made of stainless steel 1.4301, screws made of stainless steel V2A, handle and slide strips made of stainless steel 1.4301, actuator and switch bracket included (similar to figure)	<b>096 058</b> Bolt TZ-C-NIRO-C2101