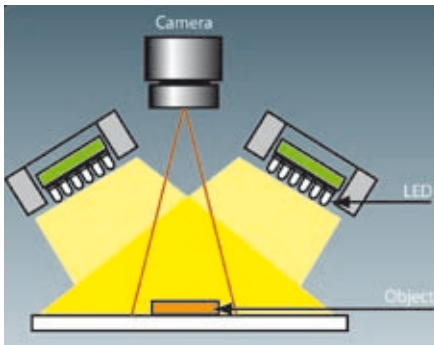


SURFACE LIGHT FOR AREA LIGHT ILLUMINATION



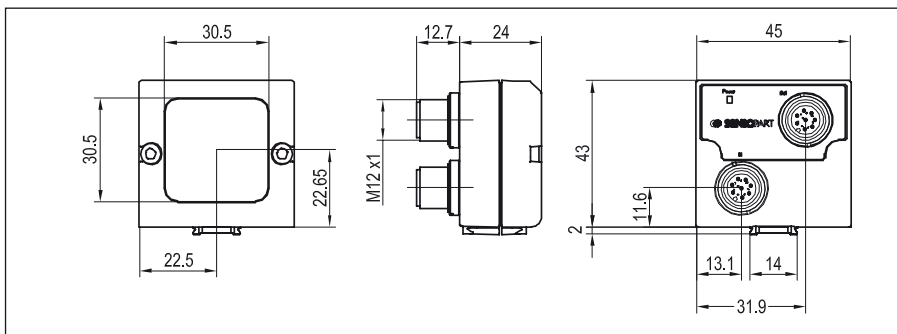
Characteristics

Low-cost LED surface light in IP65/67 housing, for front illumination of objects. Light can be cascaded from several directions. Does not require a switching amplifier.

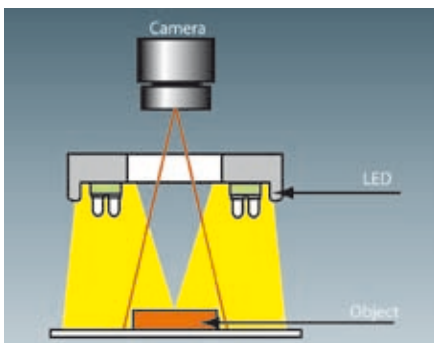
Main application

Illumination and inspection of diffuse or poorly-reflective objects in dark-field or bright-field configuration.

Item no.	Part name	Description
525-51136	LF 45 W	Surface light FA45 white
525-51137	LF 45 IR	Surface light FA45 infrared
525-51144	LF 45 R	Surface light FA45 red



RING LIGHT FOR FRONT ILLUMINATION



Characteristics

Low-cost LED ring light in IP65/67 housing for front illumination of objects. Does not require a switching amplifier.

Main application

Bright symmetrical illumination and inspection of diffuse or poorly-reflective objects in dark-field or bright-field configuration.

Item no.	Part name	Description	Suitable fixing bracket
525-51139	LFR 45 WD	Ring light white, two rows	543-11015
525-51141	LFR 45 ID	Ring light infrared, two rows	543-11015
525-51143	LFR 45 RD	Ring light red, two rows	543-11015

