

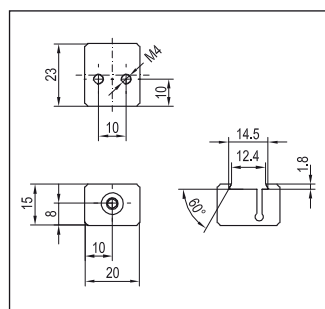
MOUNTING ACCESSORIES SENSOR

Mounting clamp Dovetail MK 45

Mounting adapter for dovetail on sensor, surface light or connection adapter.

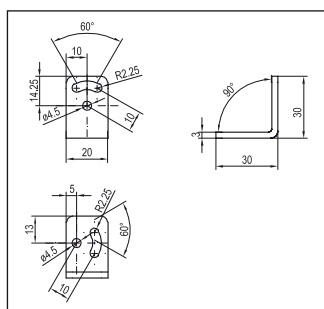


One mounting clamp is included with the above-mentioned devices.



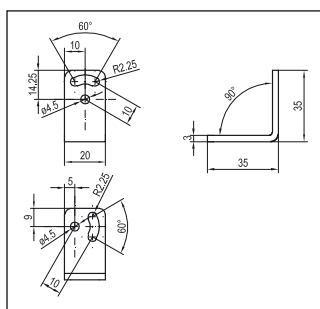
Fixing bracket short MA45

For connecting dovetail clamp with rod mounting block. Also for central mounting of ring light LFR.



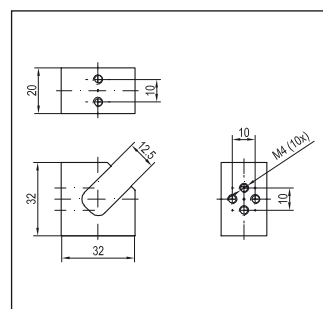
Fixing bracket long MA45 L

Fixing bracket for connecting dovetail clamp with rod mounting block.



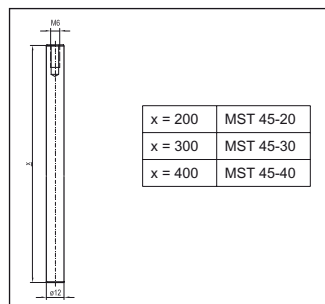
Rod mounting block MB45

Mounting block for connecting fixing bracket and mounting rod.



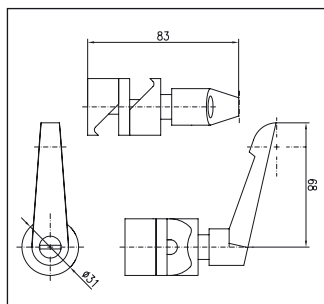
Mounting rod MST 45-xx

Mounting rod available in lengths: 200, 300 or 400 mm.



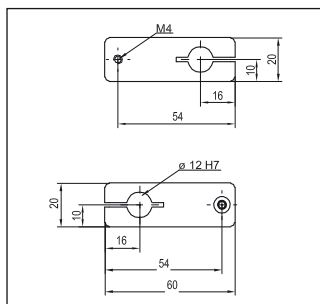
Mounting hinge MG 45

Mounting hinge for connecting two mounting rods in a fast and flexible manner.



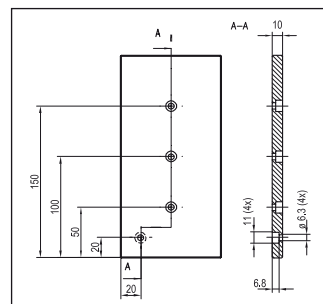
Mounting link MZ 45

Provides permanent connection between two mounting rods.



Mounting plate MP 45

Plate for mounting a rod as a stand etc.



Item no.	Part name	Description
543-11000	MK 45	Mounting clamp dovetail
543-11001	MA 45	Fixing bracket short
543-11013	MA 45 L	Fixing bracket long
543-11002	MB 45	Rod mounting block
543-11005	MST 45-20	Mounting rod 20 cm

Item no.	Part name	Description
543-11006	MST 45-30	Mounting rod 30 cm
543-11007	MST 45-40	Mounting rod 40 cm
543-11008	MG 45	Mounting hinge
543-11004	MZ 45	Mounting link
543-11003	MP 45	Mounting plate